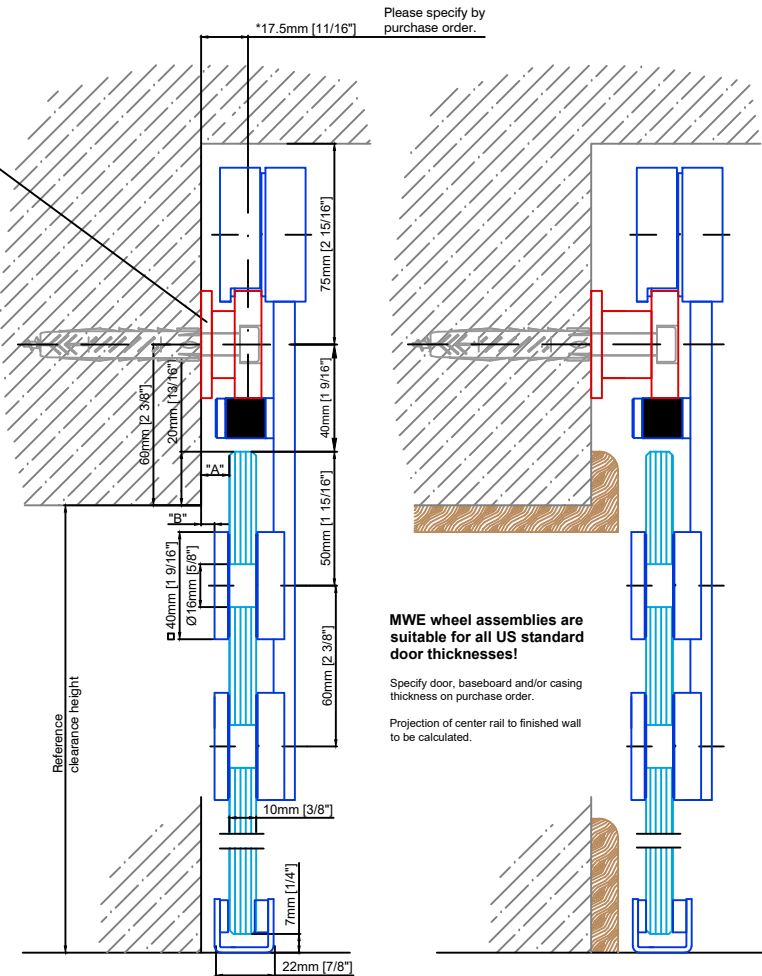
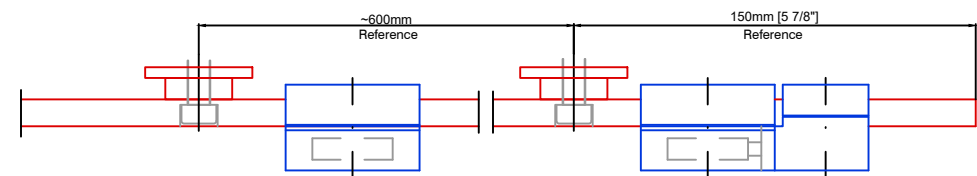
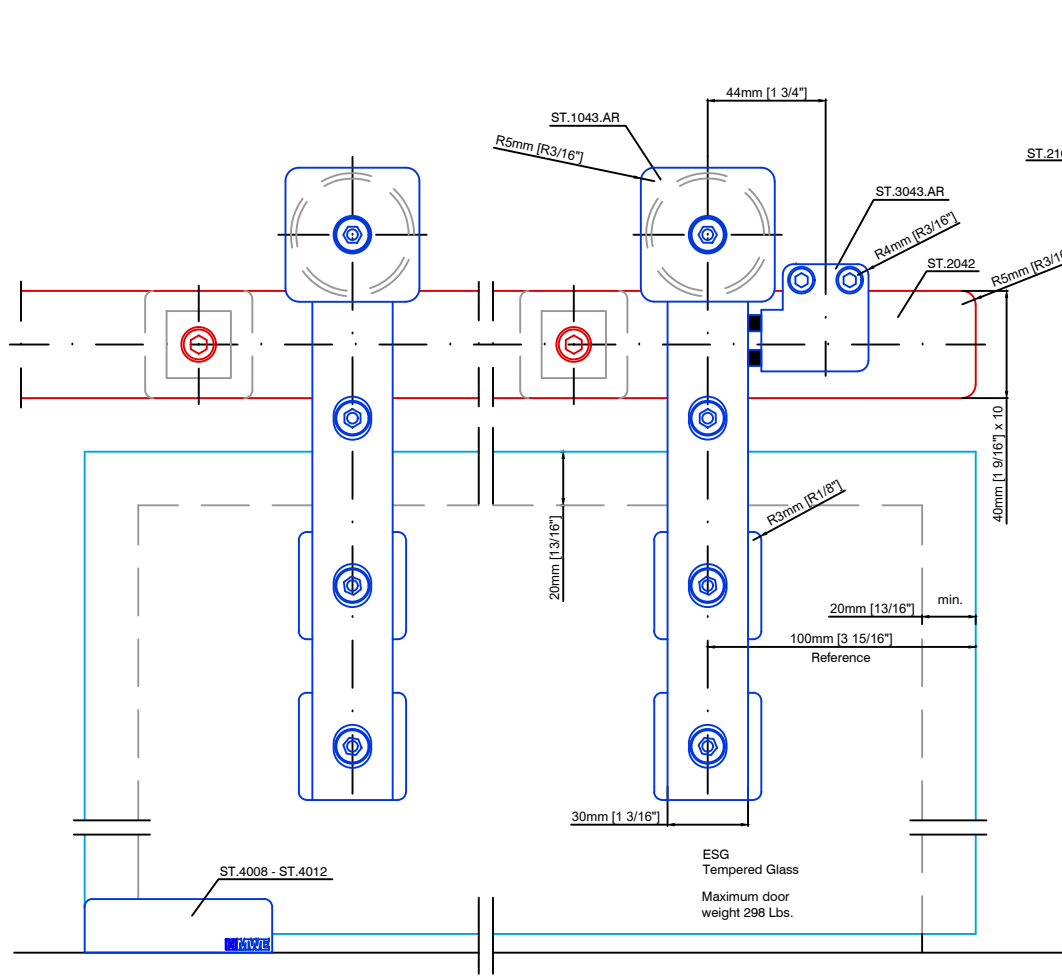


Technical drawings are subject to change without notice.
 All millimeter dimensions are exact and supersede inch conversions.



MWE wheel assemblies are suitable for all US standard door thicknesses!
 Specify door, baseboard and/or casing thickness on purchase order.
 Projection of center rail to finished wall to be calculated.

(*) ST.2100.AR Projection (center rail to finished wall)
 17.5mm [11/16\"/>

Dimension	8mm	10mm	12mm
A	12mm	10mm	8mm
B	6.5mm	4.5mm	2.5mm
C	24mm	28mm	28mm

Dimension	Glass 5/16"	3/8"	1/2"
A	1/2"	3/8"	5/16"
B	1/4"	3/16"	1/8"
C	15/16"	1"	1 1/8"

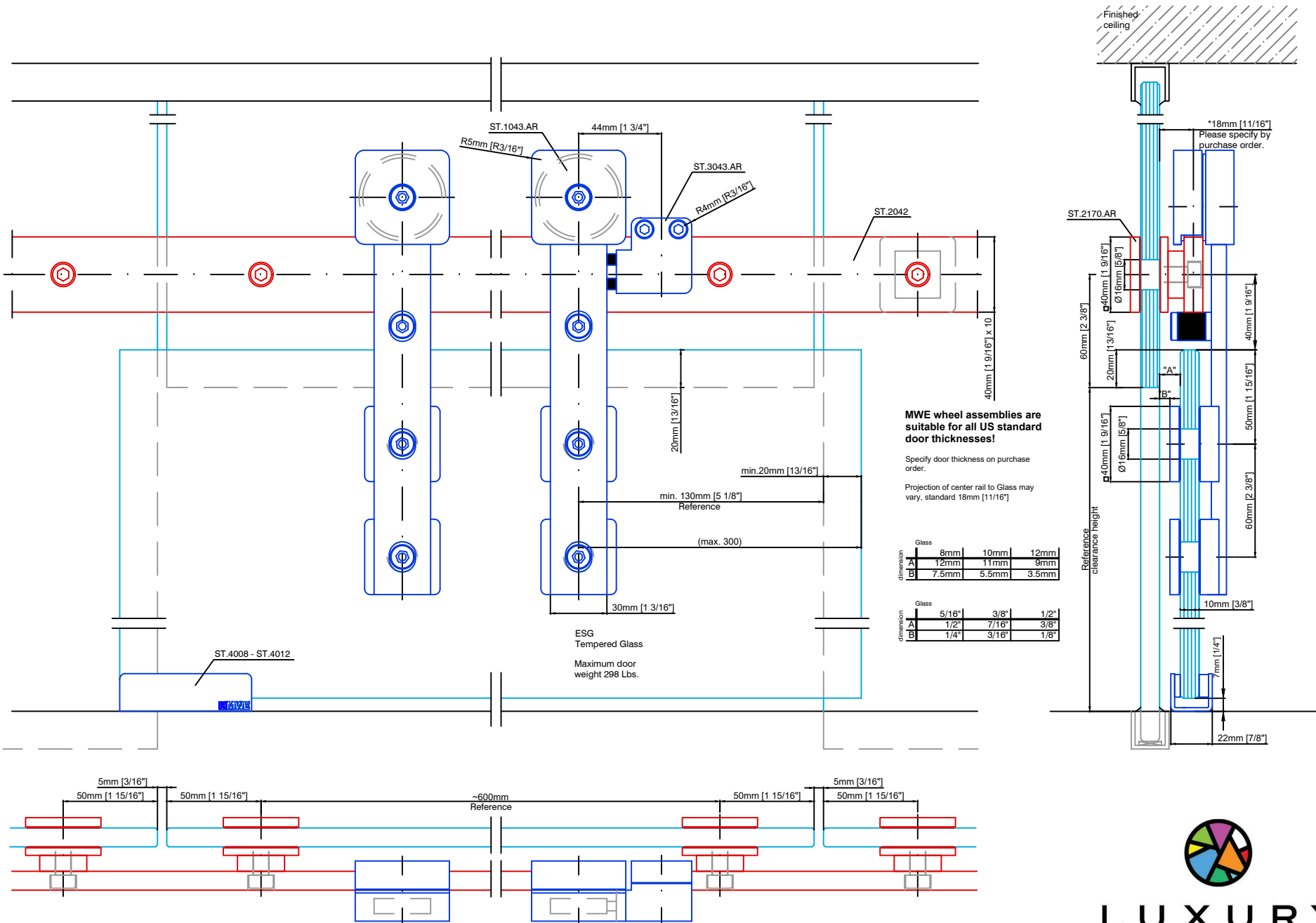
Akzent Retro ST.1043.AR

Date Prepared: July 2018 | Prepared By: CDA | JRT



LUXURY
 GLASS & HARDWARE
 www.luxuryglassandhardware.com

Technical drawings are subject to change without notice.
 All millimeter dimensions are exact and supersede inch conversions.



Akzent Retro ST.1043.AR

Date Prepared: July 2018

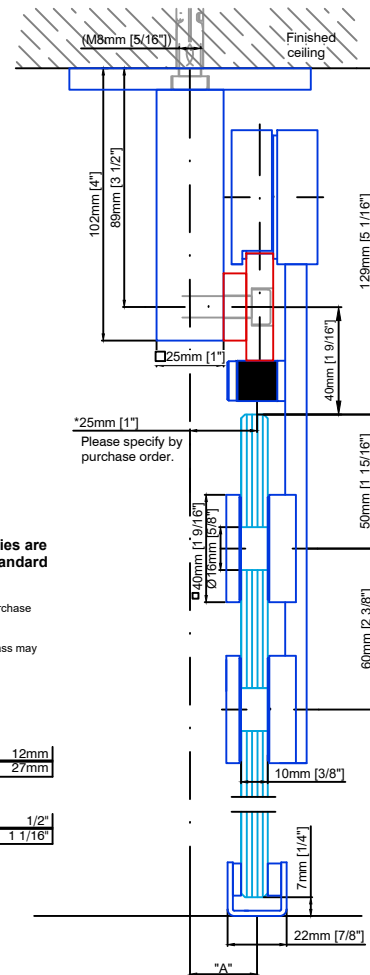
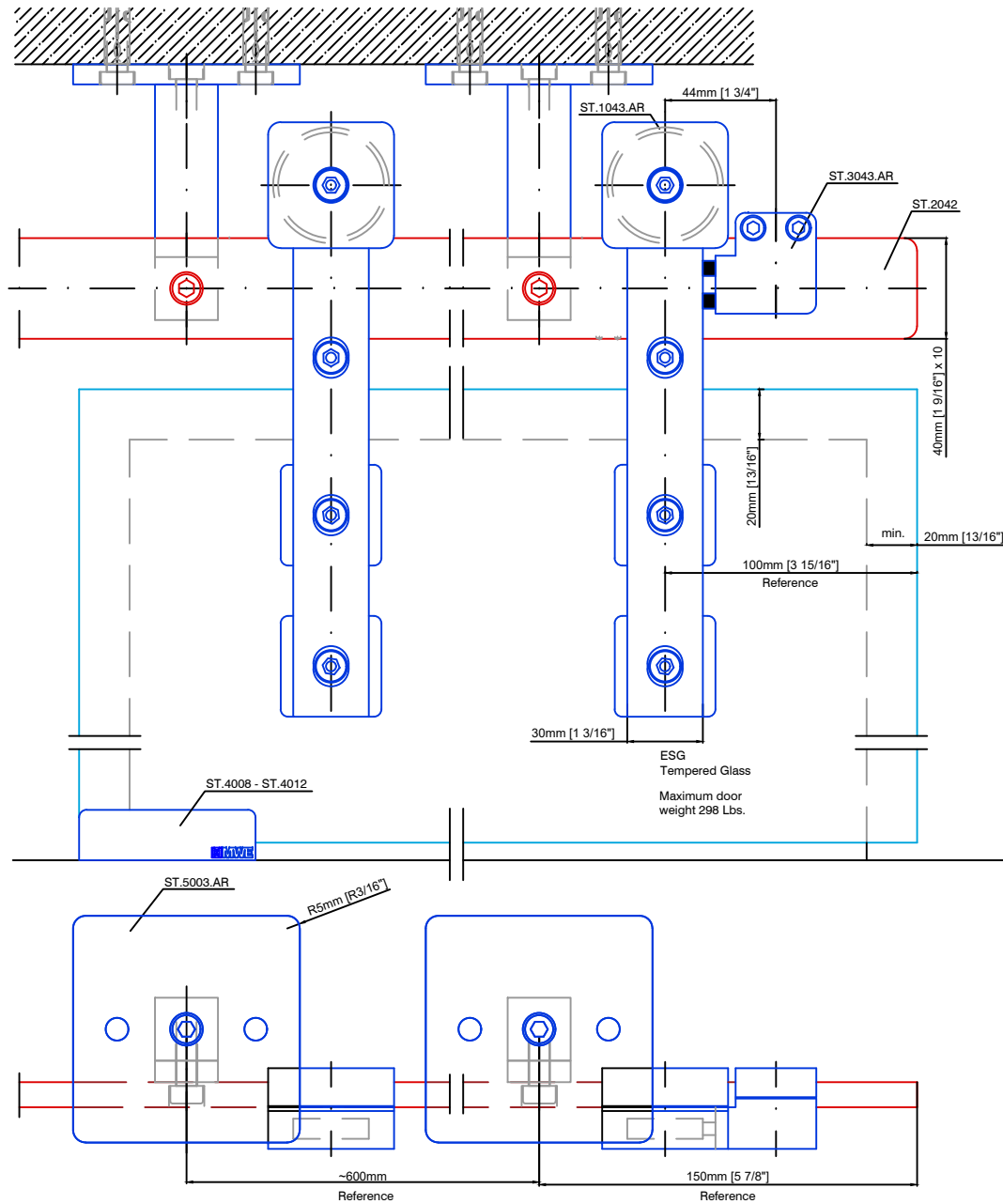
Prepared By: CDA | JRT



LUXURY
 GLASS & HARDWARE

www.luxuryglassandhardware.com

Technical drawings are subject to change without notice.
 All millimeter dimensions are exact and supersede inch conversions.



MWE wheel assemblies are suitable for all US standard door thicknesses!

Specify door thickness on purchase order.

Projection of center rail to Glass may vary, standard 26mm [1\"]

dimension	Glass	8mm	10mm	12mm
A		25mm	25mm	27mm

dimension	Glass	5/16"	3/8"	1/2"
A		1"	1"	1 1/16"

Akzent Retro ST.1043.AR

Date Prepared: July 2018

Prepared By: CDA | JRT



LUXURY
 GLASS & HARDWARE

www.luxuryglassandhardware.com