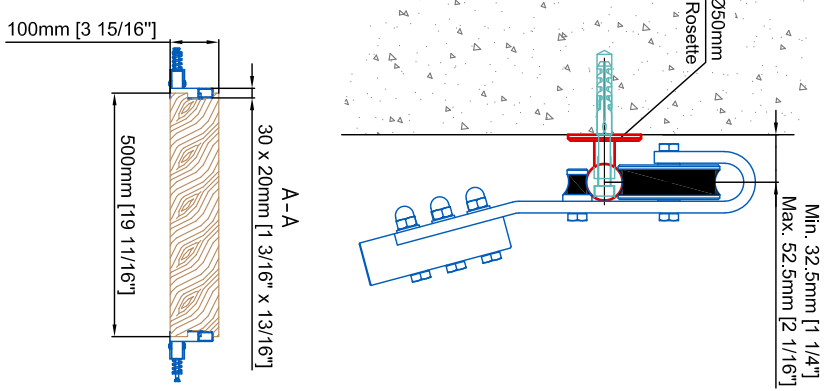
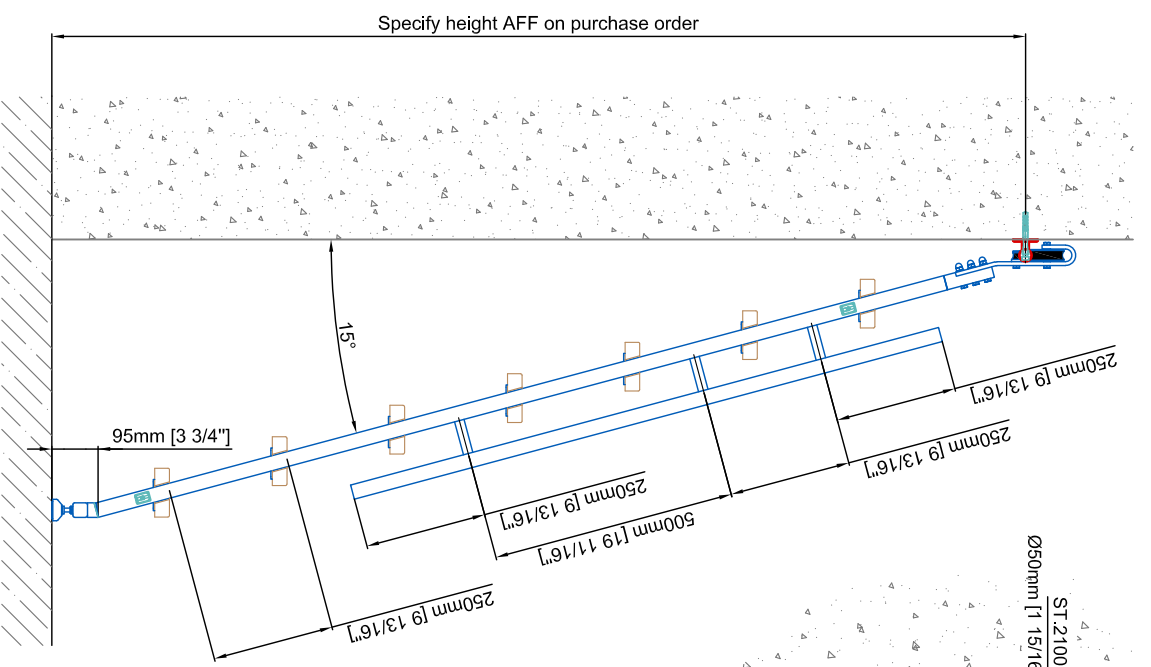
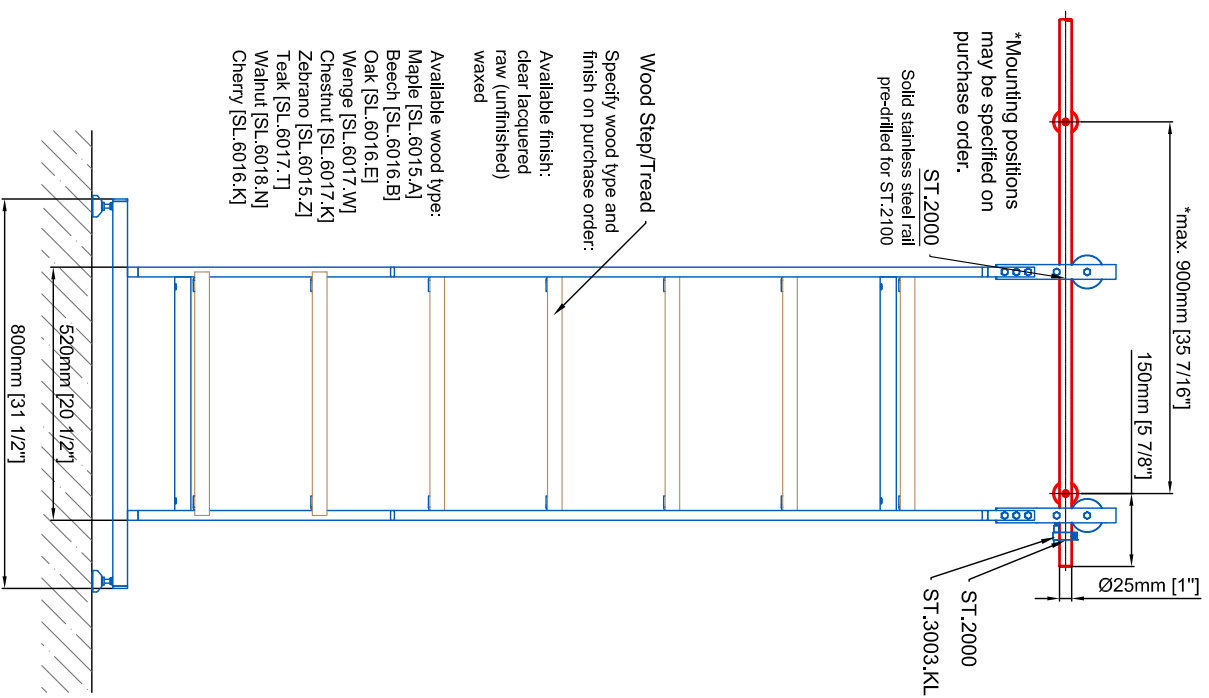


Technical drawings are subject to change without notice.  
All millimeter dimensions are exact and supersede inch conversions.

All ladder systems require reinforced walls, cabinets, or shelving.



# Industrial Ladder SL.6022.A

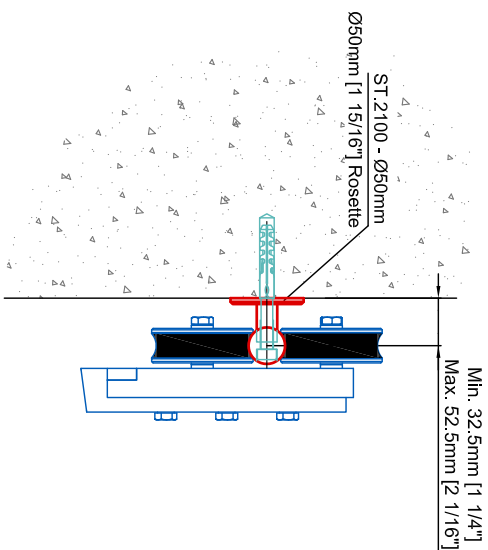
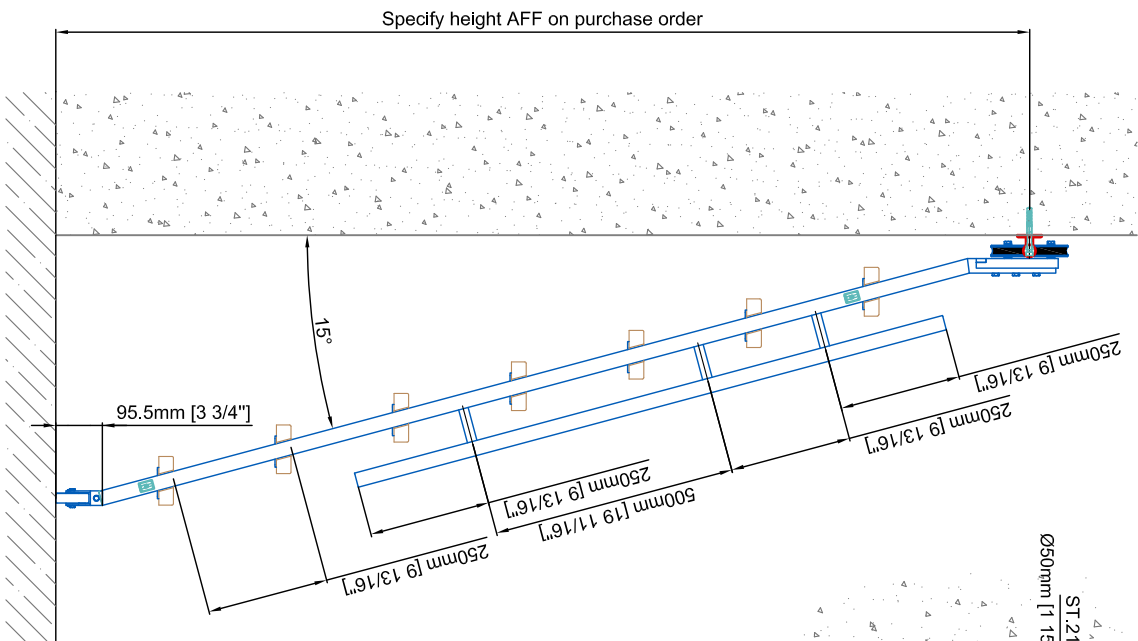
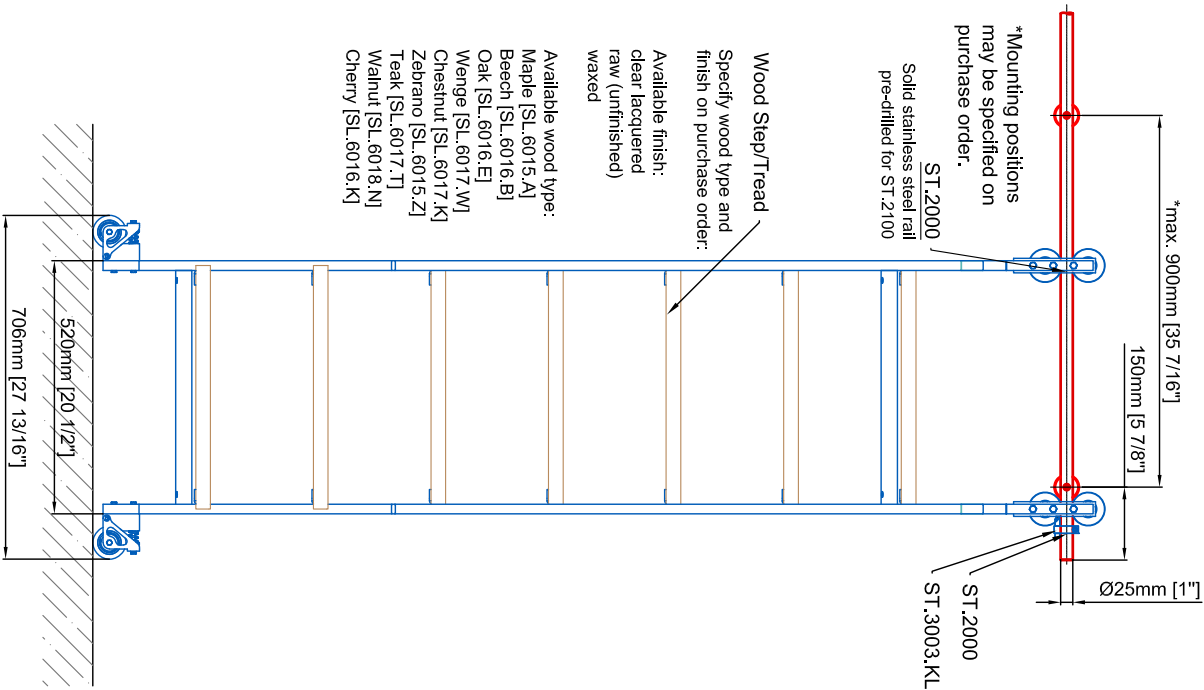
Date Prepared: Sept. 2019 Prepared By: CDA



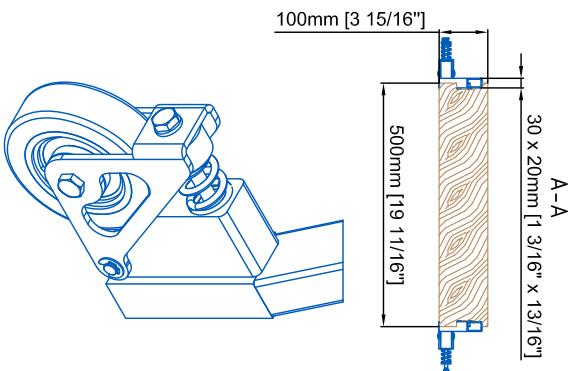
**LUXURY**  
GLASS & HARDWARE  
www.luxuryglassandhardware.com

Technical drawings are subject to change without notice.  
All millimeter dimensions are exact and supersede inch conversions.

Ladder height at or above 3000mm [118 1/8"]  
require safety side rails SL.6052.AK



All ladder systems require reinforced walls, cabinets, or shelving.



# Industrial Ladder SL.6022.Q

Date Prepared: Sept. 2019 Prepared By: CDA



**LUXURY**  
GLASS & HARDWARE

www.luxuryglassandhardware.com