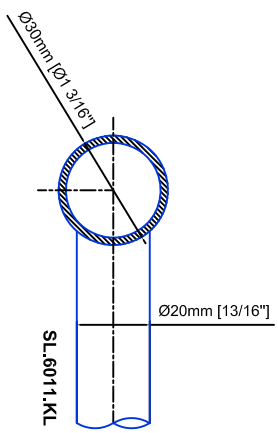
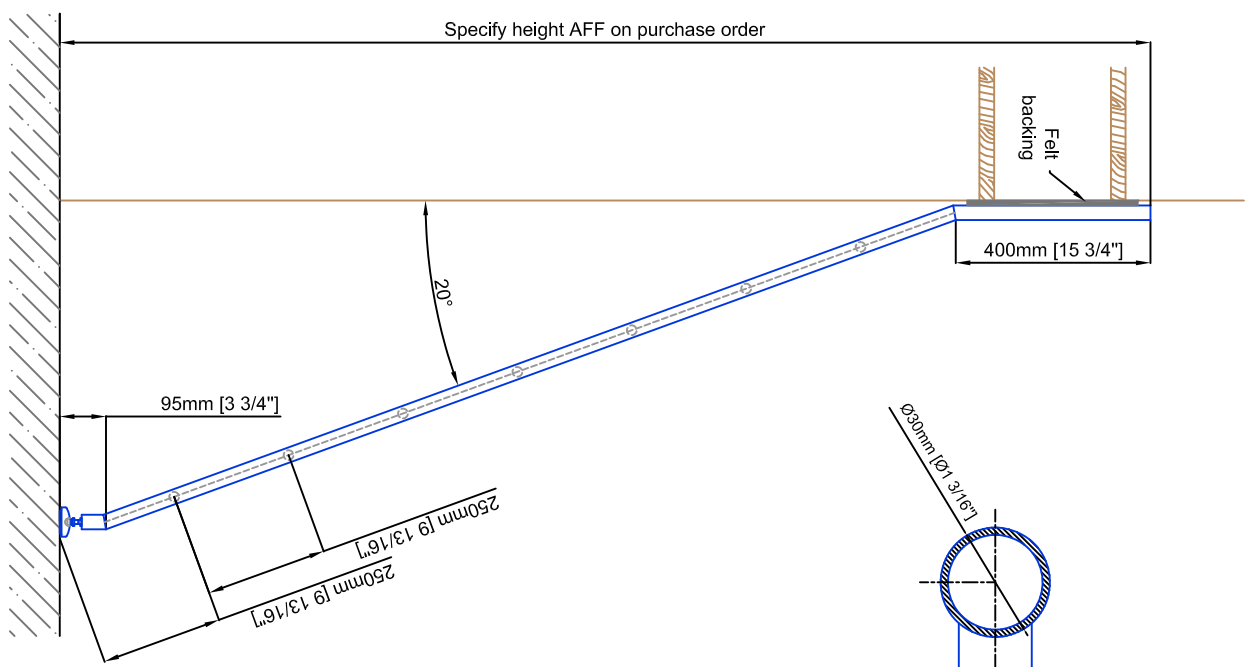
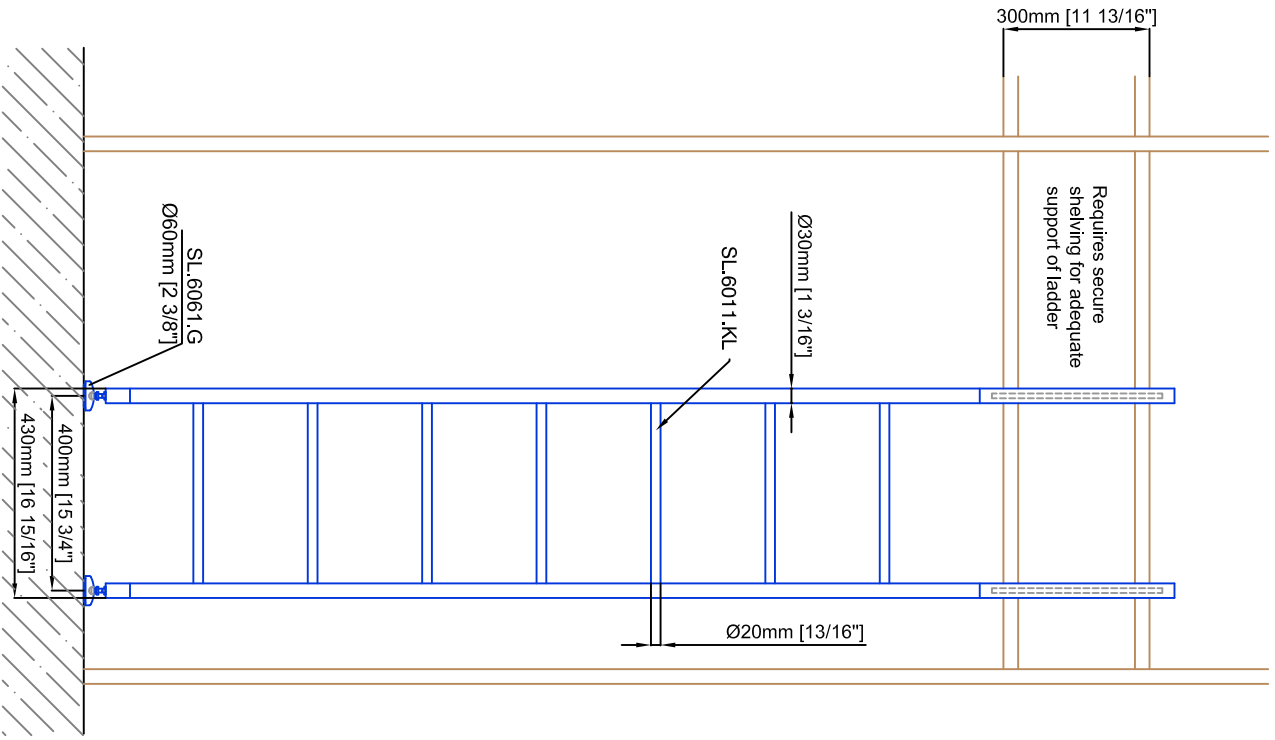


Technical drawings are subject to change without notice.  
 All millimeter dimensions are exact and supersede inch conversions.  
**Ladder height at or above 3000mm [118 1/8"]**  
**require safety side rails SL.6052.KL**

All ladder systems require reinforced walls, cabinets, or shelving.



# Leaning Ladder SL.6000.KL

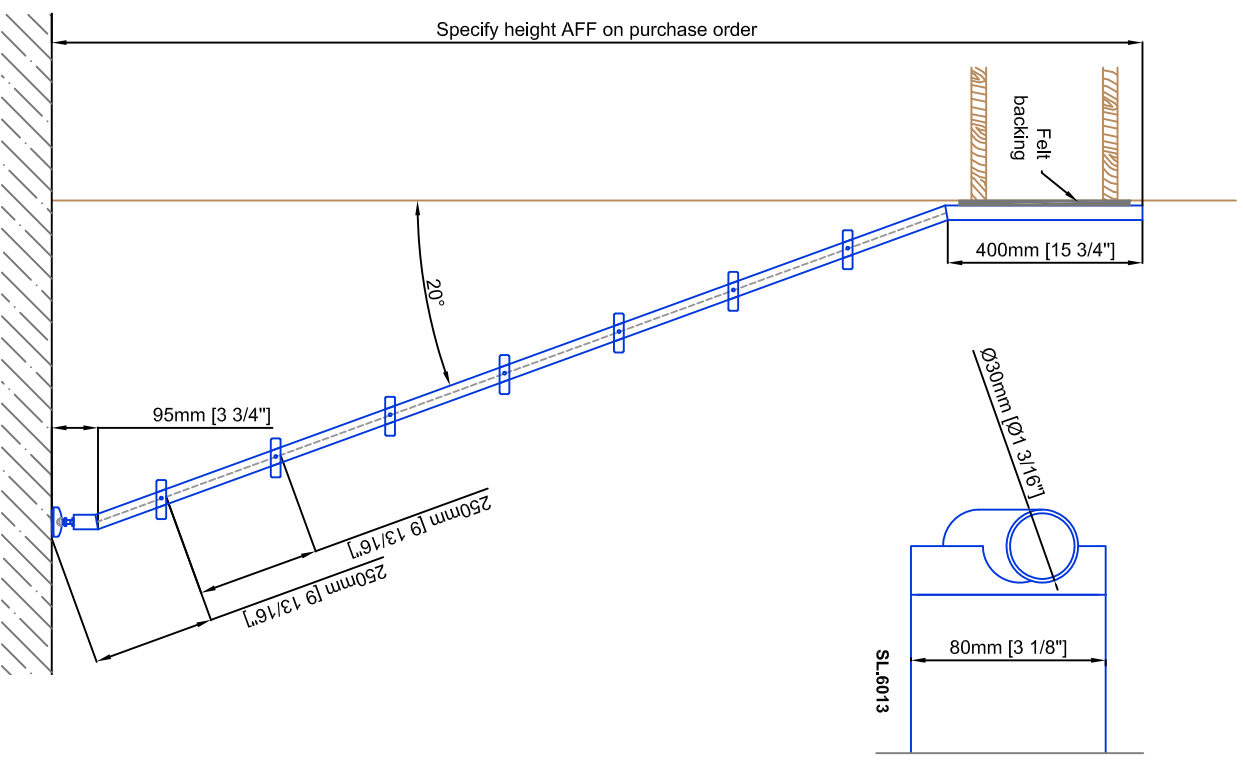
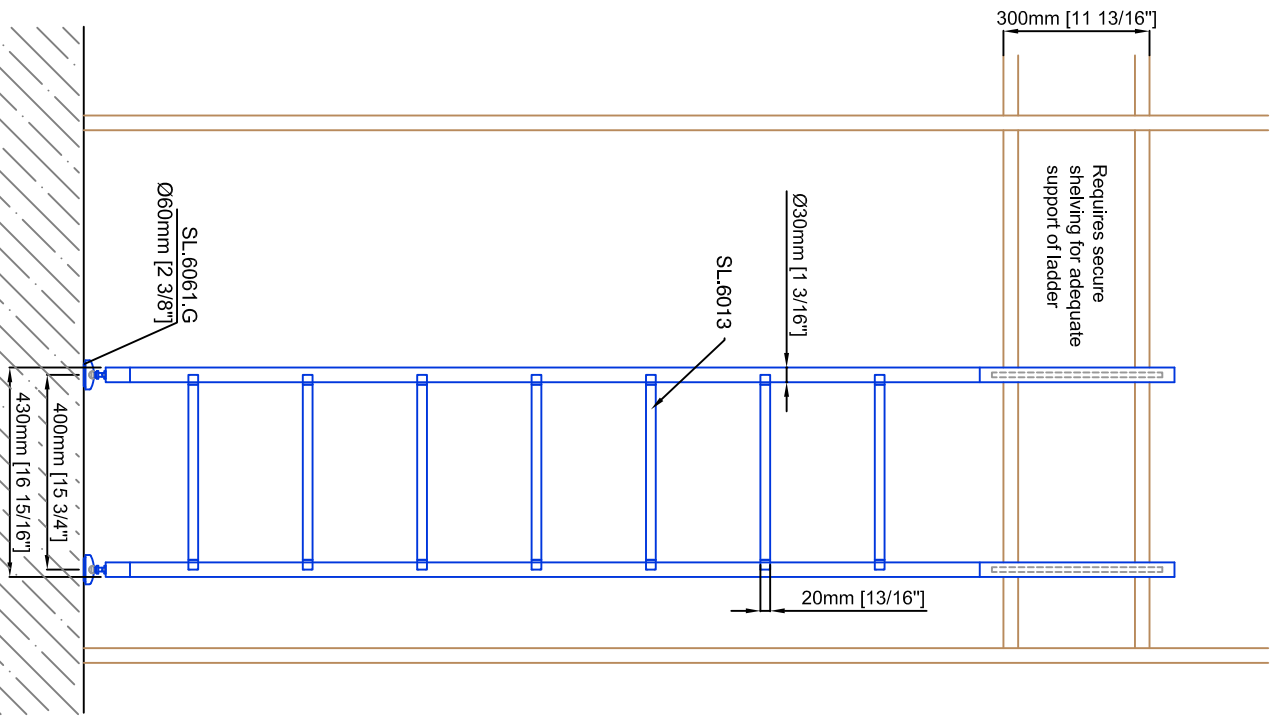
Date Prepared: October 2018 | Prepared By: CDA | JRT



**LUXURY**  
 GLASS & HARDWARE  
 www.luxuryglassandhardware.com

Technical drawings are subject to change without notice.  
 All millimeter dimensions are exact and supersede inch conversions.  
**Ladder height at or above 3000mm [118 1/8"]**  
**require safety side rails SL.6052.KL**

All ladder systems require reinforced walls, cabinets, or shelving.



# Leaning Ladder SL.6000.KL.E

Date Prepared: October 2018 | Prepared By: CDA | JRT

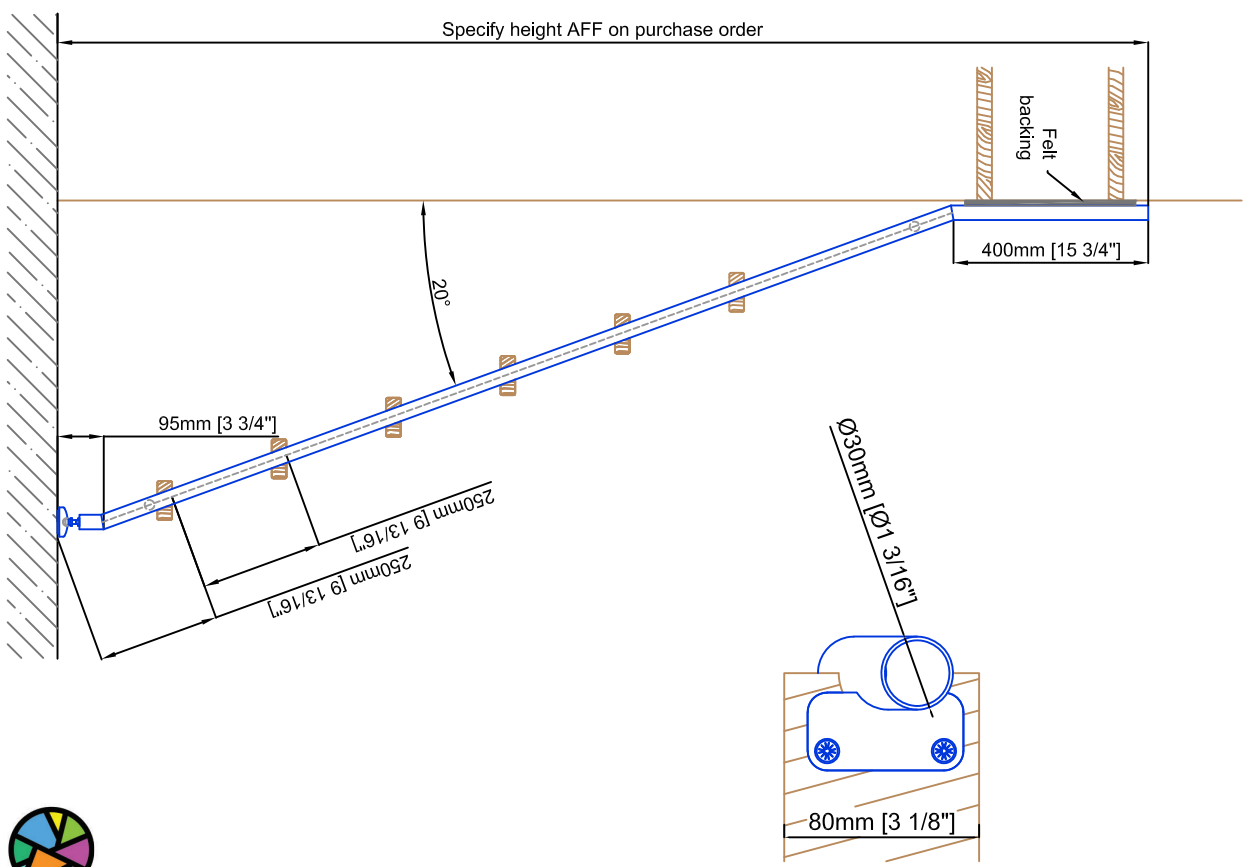
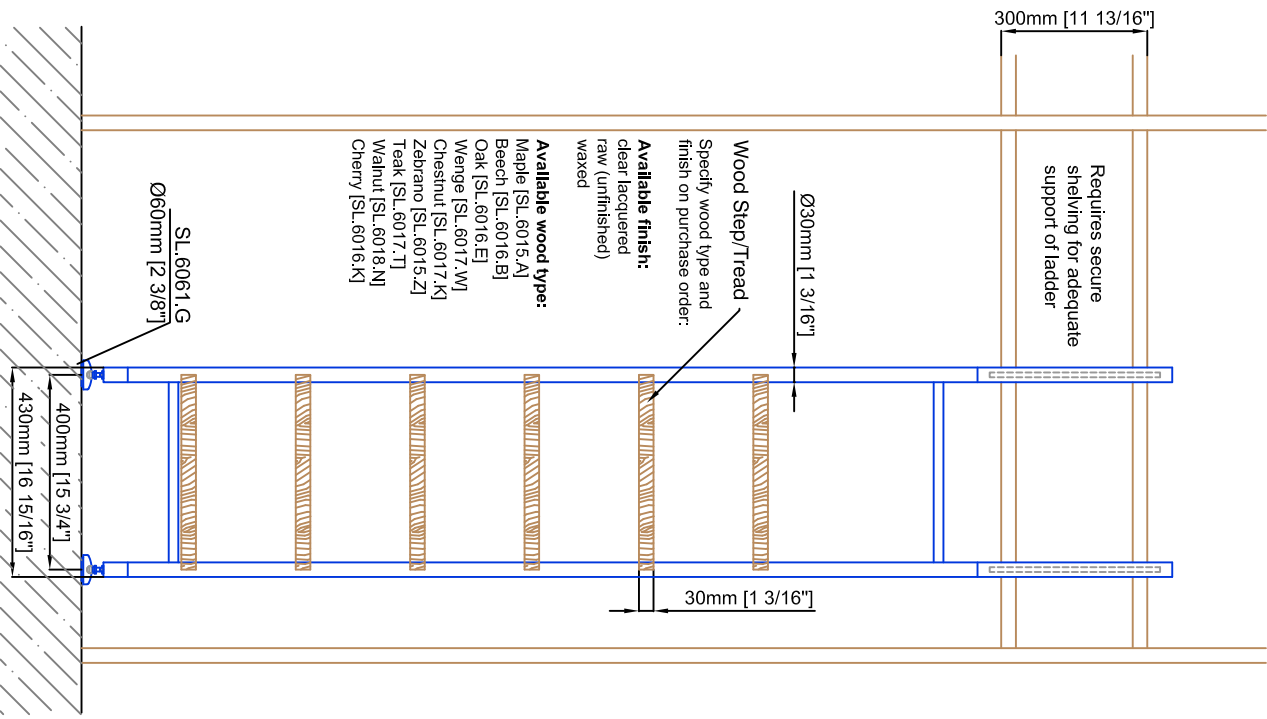


**LUXURY**  
 GLASS & HARDWARE  
 www.luxuryglassandhardware.com

Technical drawings are subject to change without notice.  
 All millimeter dimensions are exact and supersede inch conversions.

Ladder height at or above 3000mm [118 1/8"]  
 require safety side rails SL.6052.KL

All ladder systems require reinforced walls, cabinets, or shelving.



# Leaning Ladder SL.6000.KL.H

Date Prepared: October 2018 Prepared By: CDA | JRT



**LUXURY**  
 GLASS & HARDWARE  
 www.luxuryglassandhardware.com