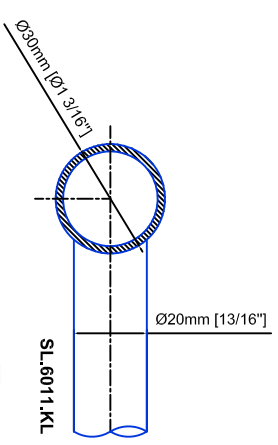
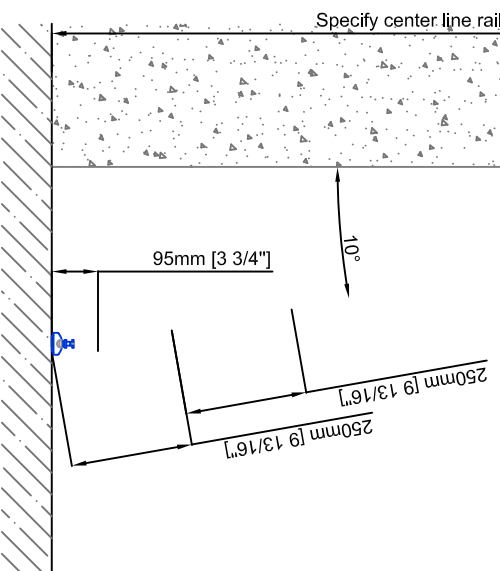
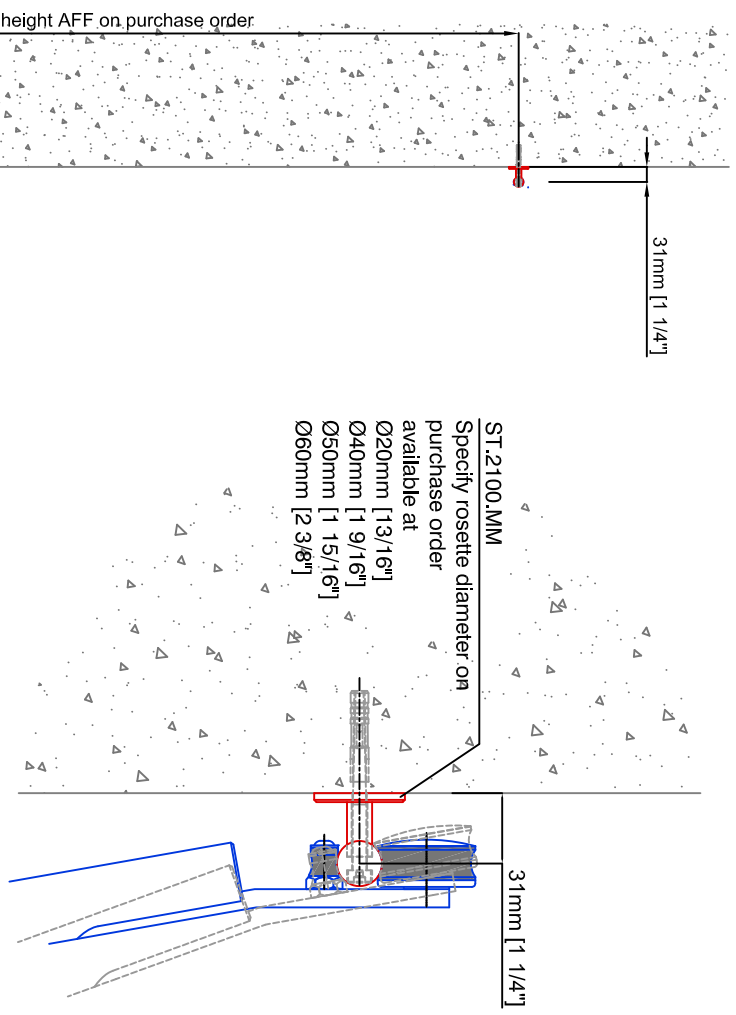
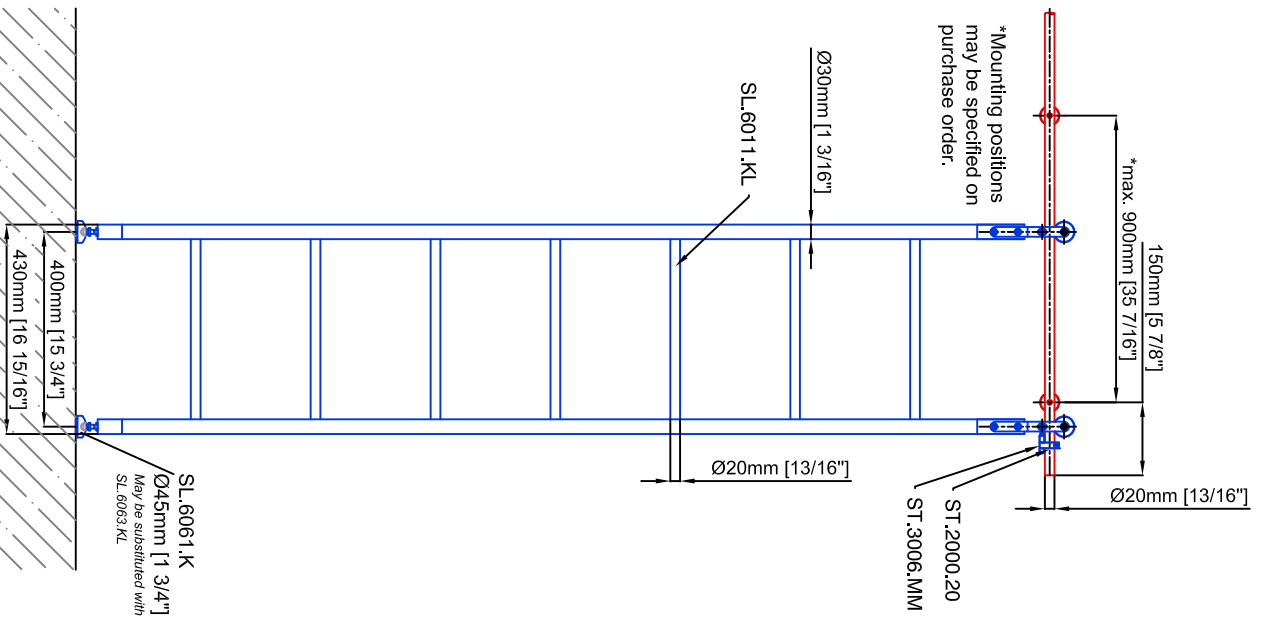


Technical drawings are subject to change without notice.  
 All millimeter dimensions are exact and supersede inch conversions.  
**Ladder height at or above 3000mm [118 1/8"]**  
**require safety side rails SL.6052.KL**

All ladder systems require reinforced walls, cabinets, or shelving.



# Sliding Ladder SL.6002.KL

Date Prepared: October 2018

Prepared By: CDA | JRT

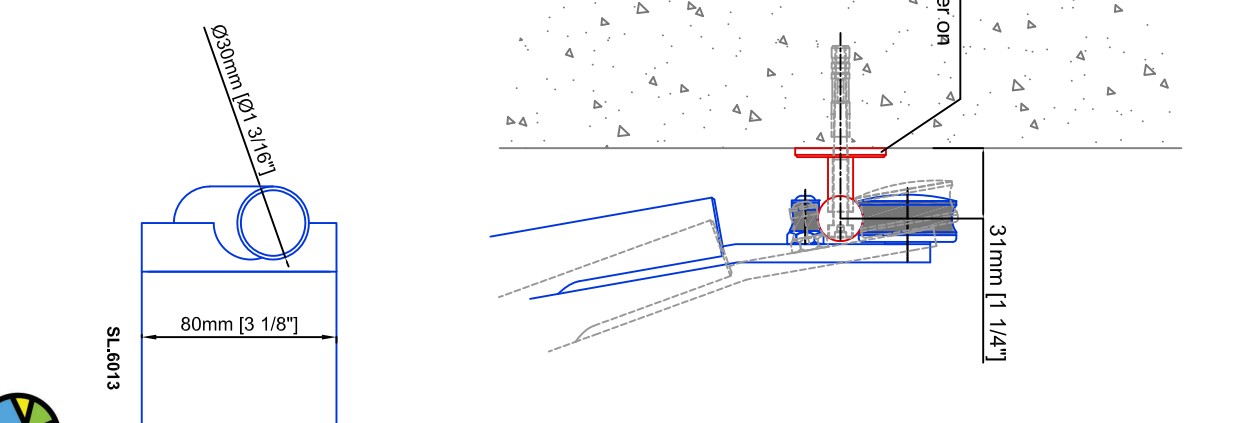
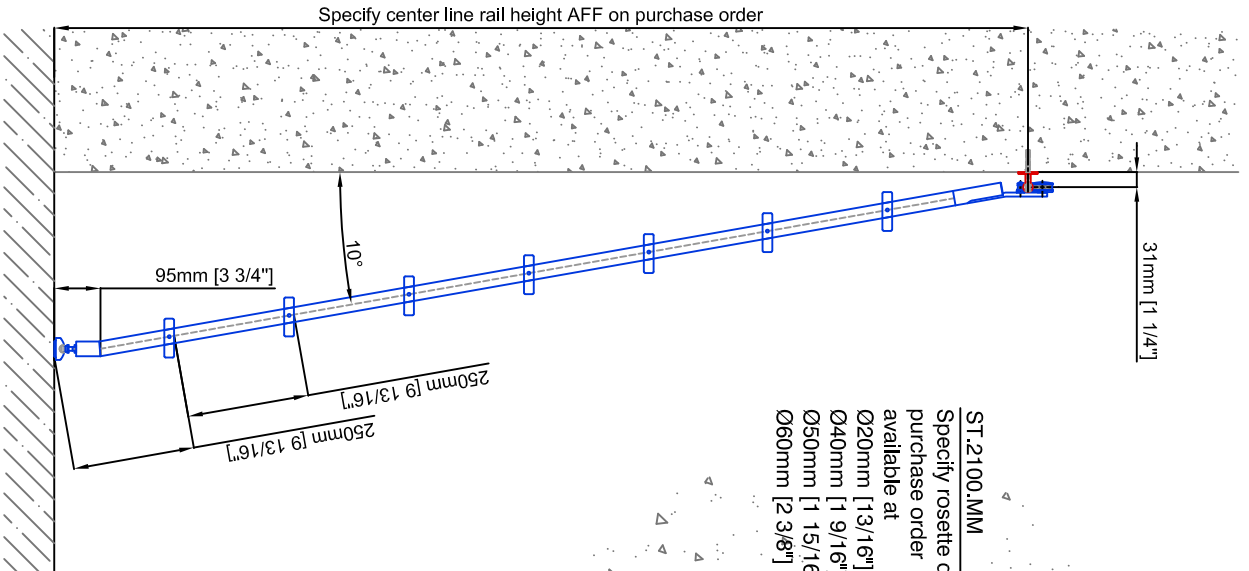
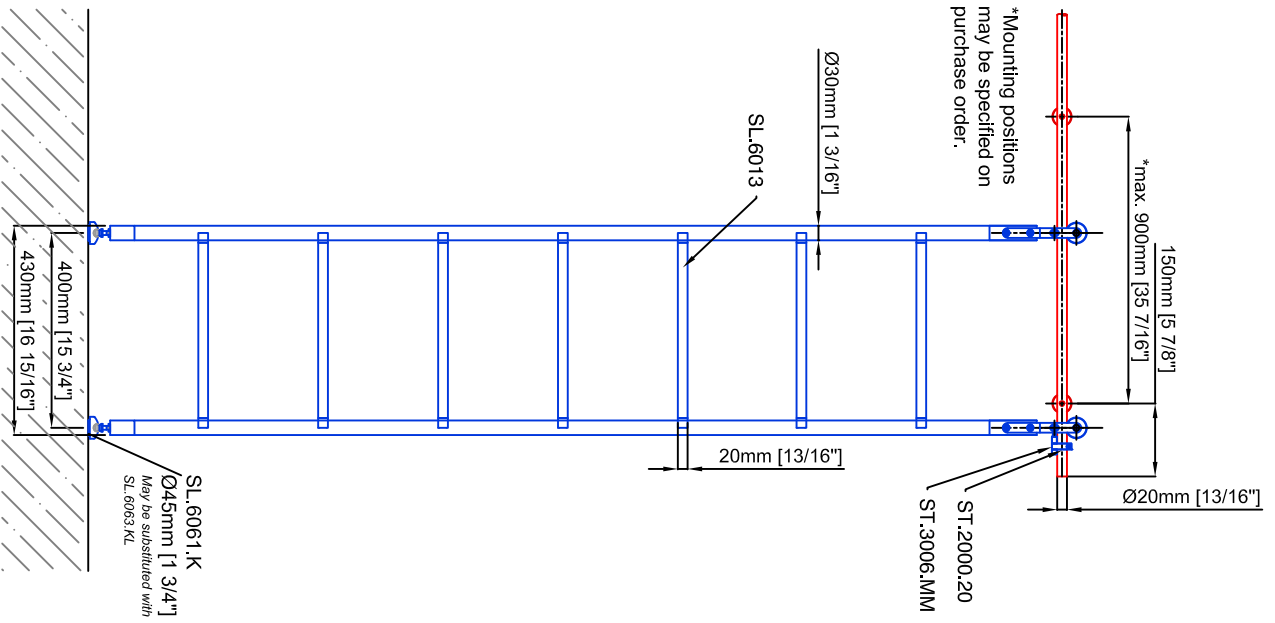


**LUXURY**  
 GLASS & HARDWARE

www.luxuryglassandhardware.com

Technical drawings are subject to change without notice.  
 All millimeter dimensions are exact and supersede inch conversions.  
**Ladder height at or above 3000mm [118 1/8"]**  
 require safety side rails SL.6052.KL

All ladder systems require reinforced walls, cabinets, or shelving.



# Sliding Ladder SL.6002.KL.E

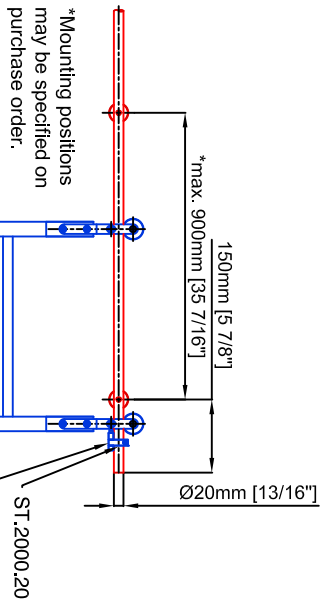
Date Prepared: October 2018 | Prepared By: CDA | JRT



**LUXURY**  
 GLASS & HARDWARE  
 www.luxuryglassandhardware.com

Technical drawings are subject to change without notice.  
 All millimeter dimensions are exact and supersede inch conversions.  
**Ladder height at or above 3000mm [118 1/8"]**  
 require safety side rails SL.6052.KL

All ladder systems require reinforced walls, cabinets, or shelving.

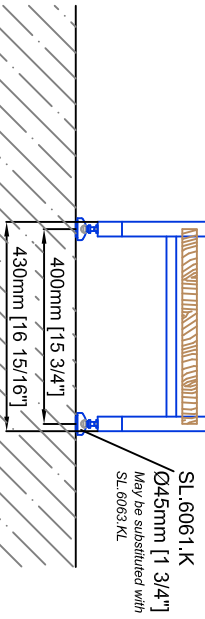


\*Mounting positions may be specified on purchase order.

Wood Step/Tread  
 Specify wood type and finish on purchase order:

Available finish:  
 clear lacquered raw (unfinished) waxed

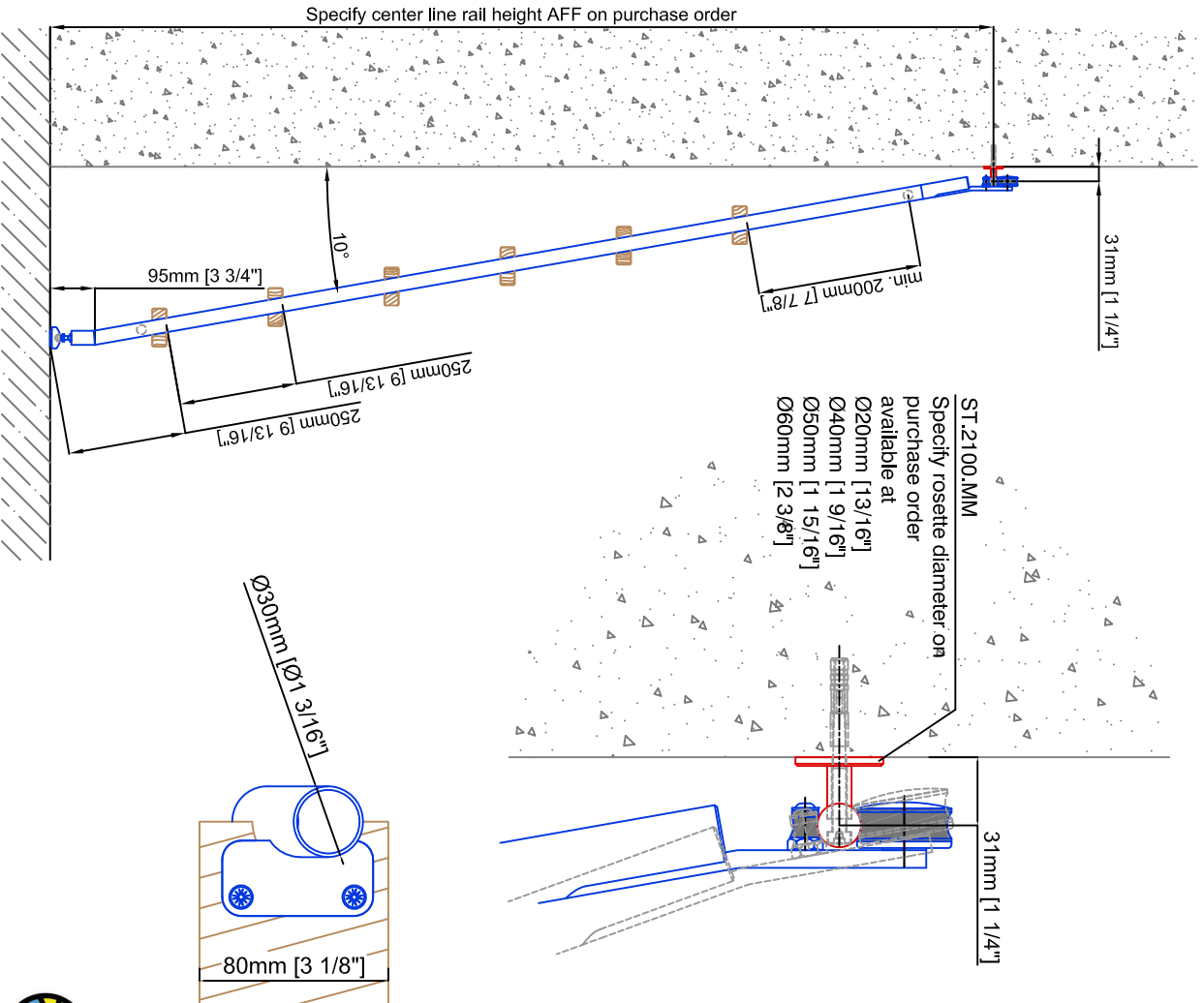
Available wood type:  
 Maple [SL.6015.A]  
 Beech [SL.6016.B]  
 Oak [SL.6016.E]  
 Wenge [SL.6017.W]  
 Chestnut [SL.6017.K]  
 Zebirano [SL.6015.Z]  
 Teak [SL.6017.T]  
 Walnut [SL.6018.N]  
 Cherry [SL.6016.K]



# Sliding Ladder SL.6002.KL

Date Prepared: October 2018

Prepared By: CDA | JRT



**LUXURY**  
 GLASS & HARDWARE

www.luxuryglassandhardware.com