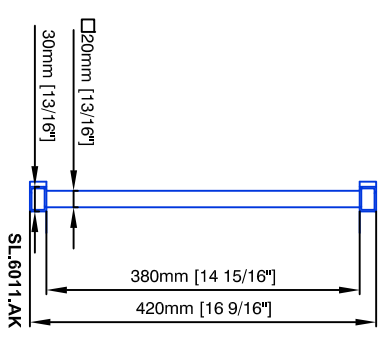
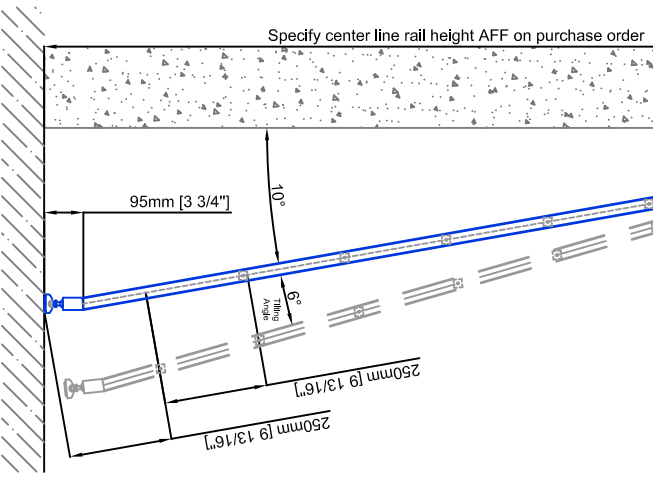
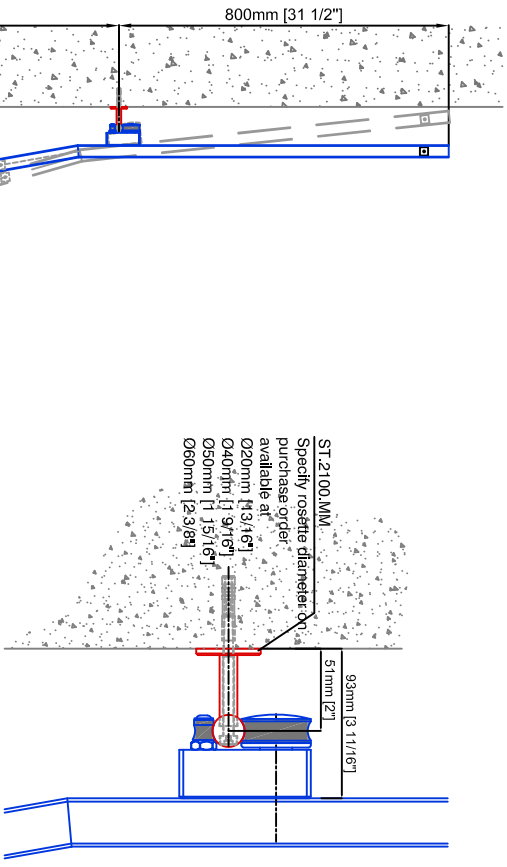
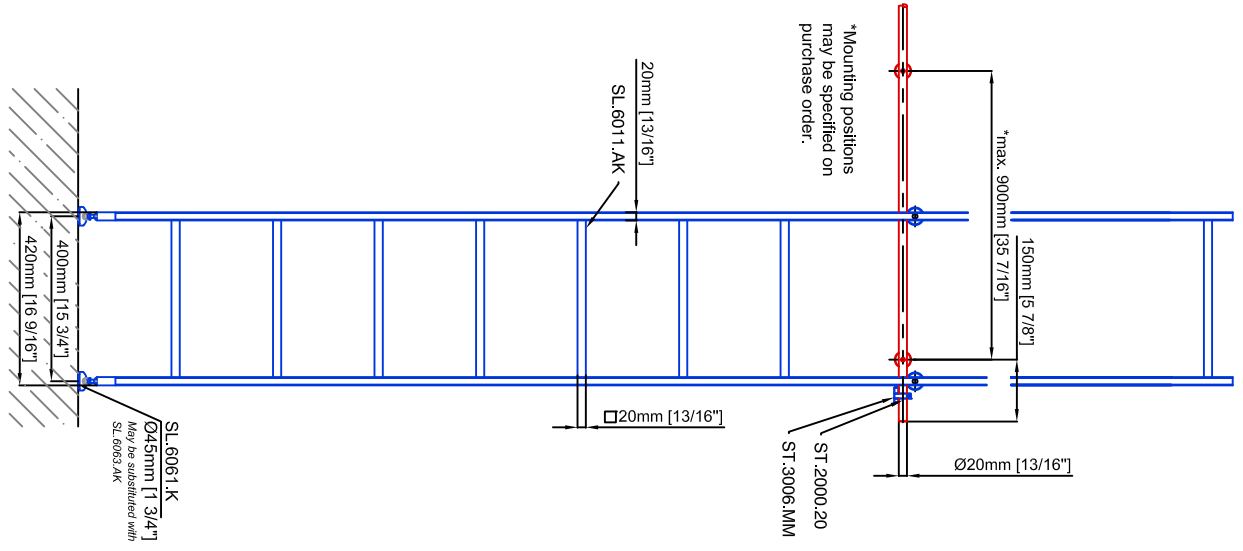


Technical drawings are subject to change without notice.  
All millimeter dimensions are exact and supersede inch conversions.

Ladder height at or above 3000mm [118 1/8"]  
require safety slide rails SL.6052.AK



All ladder systems require reinforced walls, cabinets, or shelving.

# Tangens Ladder SL.6006.AK

Date Prepared: October 2018 Prepared By: CDA | JRT

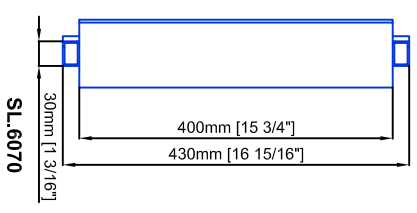
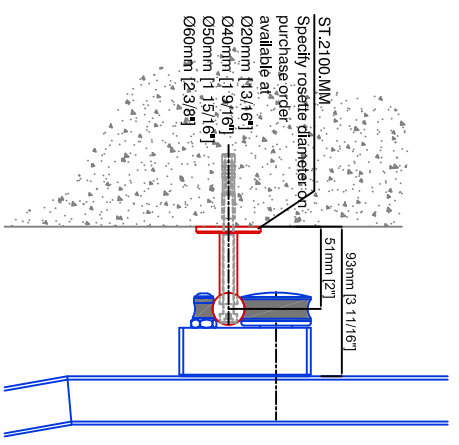
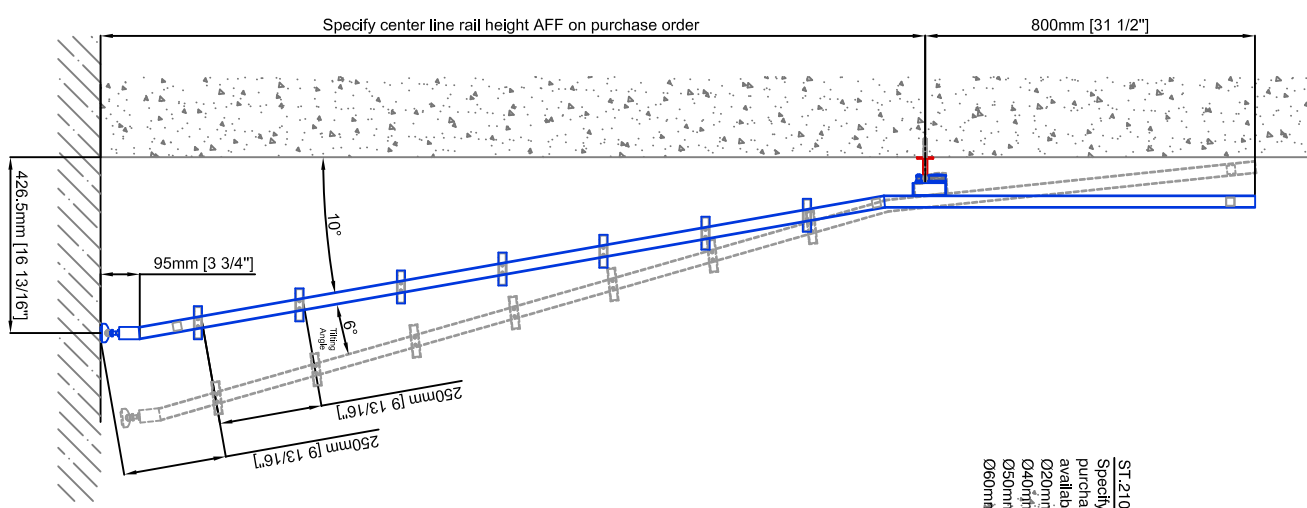
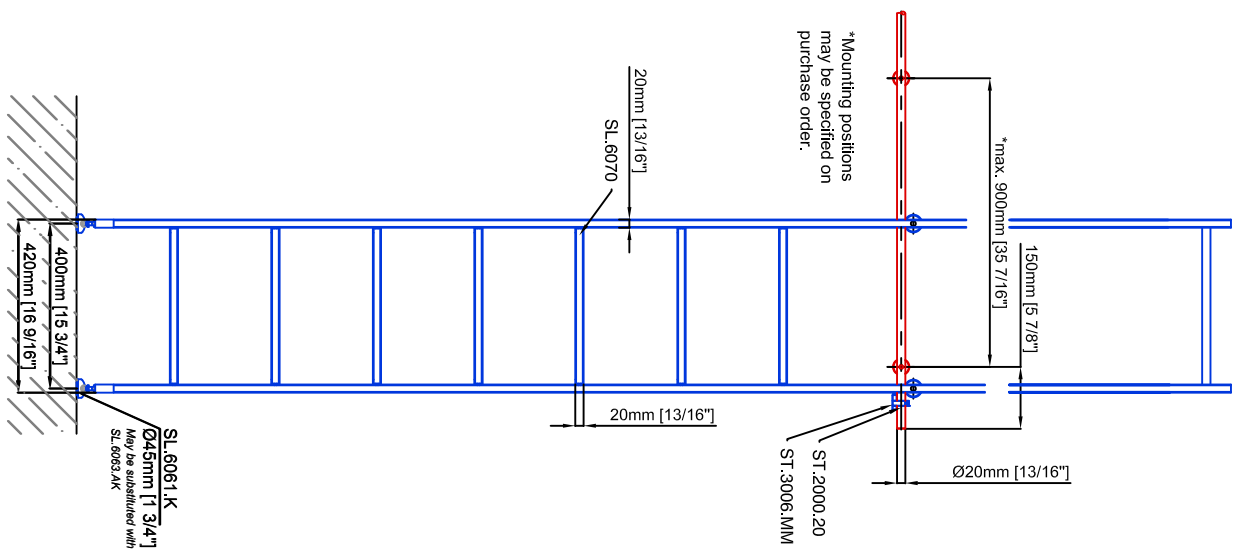


LUXURY  
GLASS & HARDWARE  
www.luxuryglassandhardware.com

Technical drawings are subject to change without notice.  
All millimeter dimensions are exact and supersede inch conversions.

Ladder height at or above 3000mm [118 1/8"]  
require safety slide rails SL.6052.AK

All ladder systems require reinforced walls, cabinets, or shelving.



# Tangens Ladder SL.6006.AK.E

Date Prepared: October 2018 Prepared By: CDA | JRT

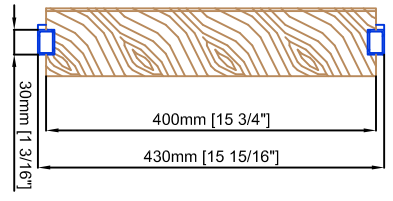
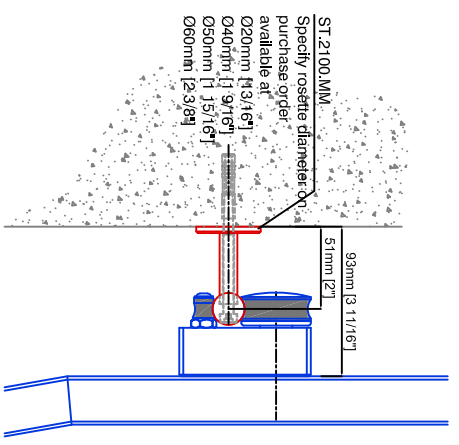
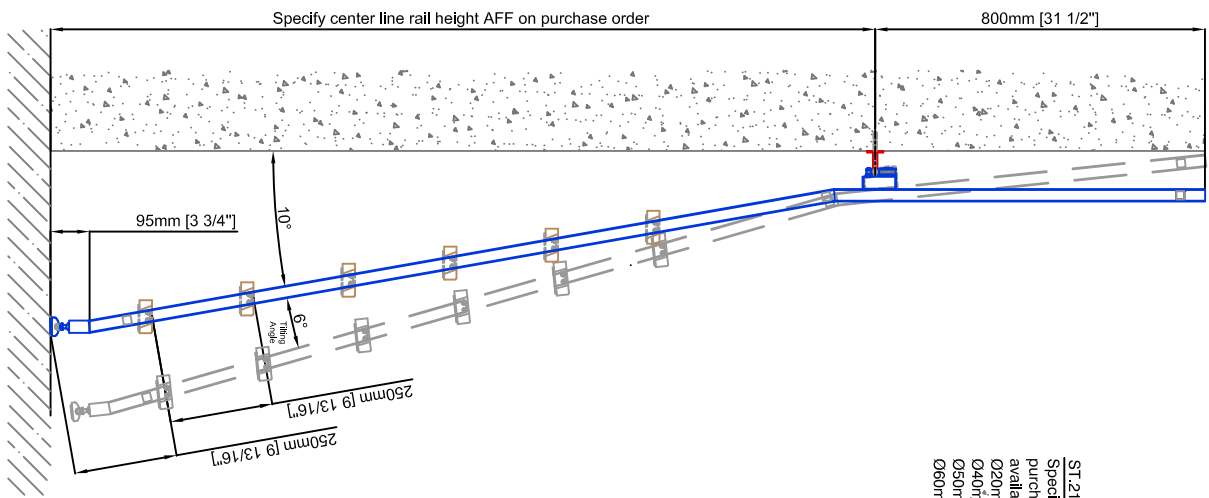
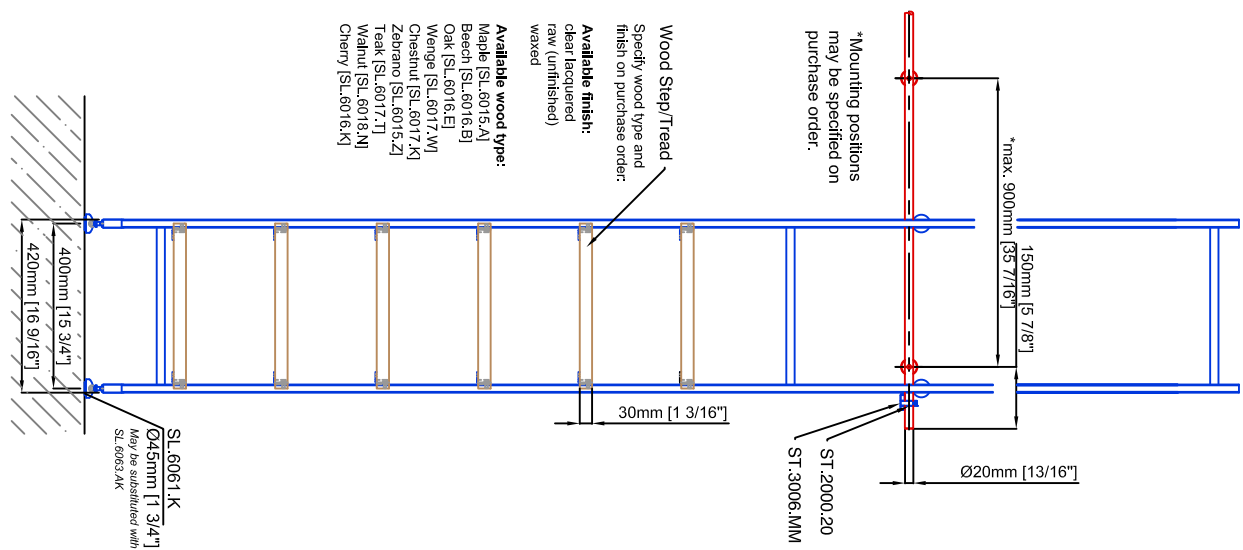


**LUXURY**  
GLASS & HARDWARE  
www.luxuryglassandhardware.com

Technical drawings are subject to change without notice.  
All millimeter dimensions are exact and supersede inch conversions.

Ladder height at or above 3000mm [118 1/8"]  
require safety slide rails SL.6052.AK

All ladder systems require reinforced walls, cabinets, or shelving.



# Tangens Ladder SL.6006.AK.H

Date Prepared: October 2018 Prepared By: CDA | JRT



**LUXURY**  
GLASS & HARDWARE  
www.luxuryglassandhardware.com