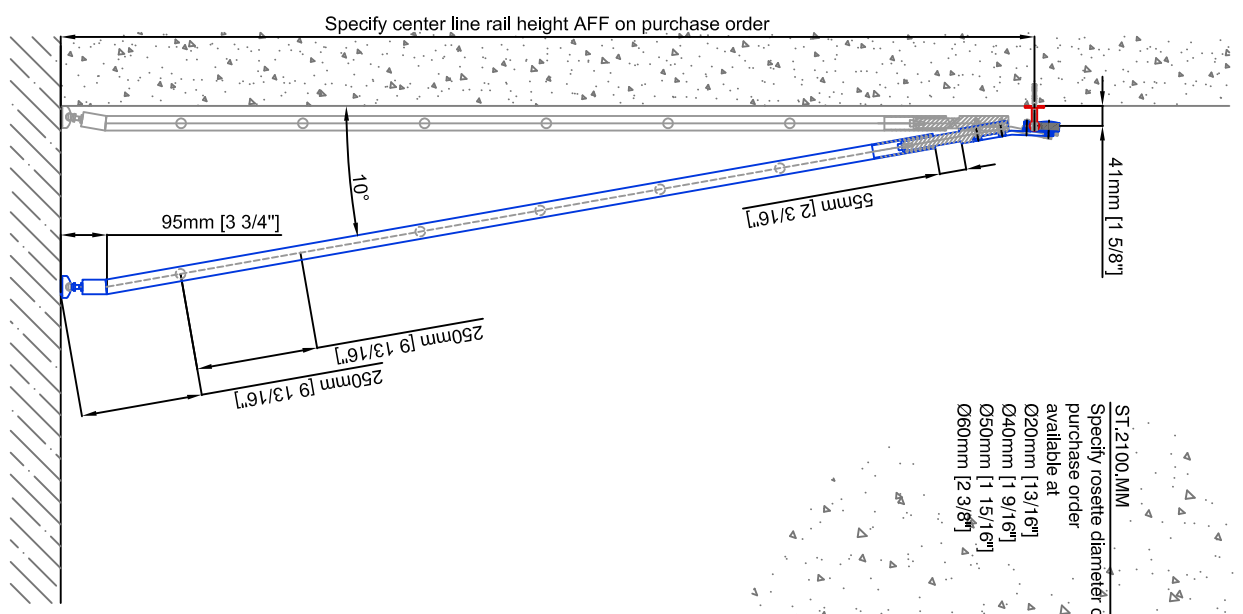
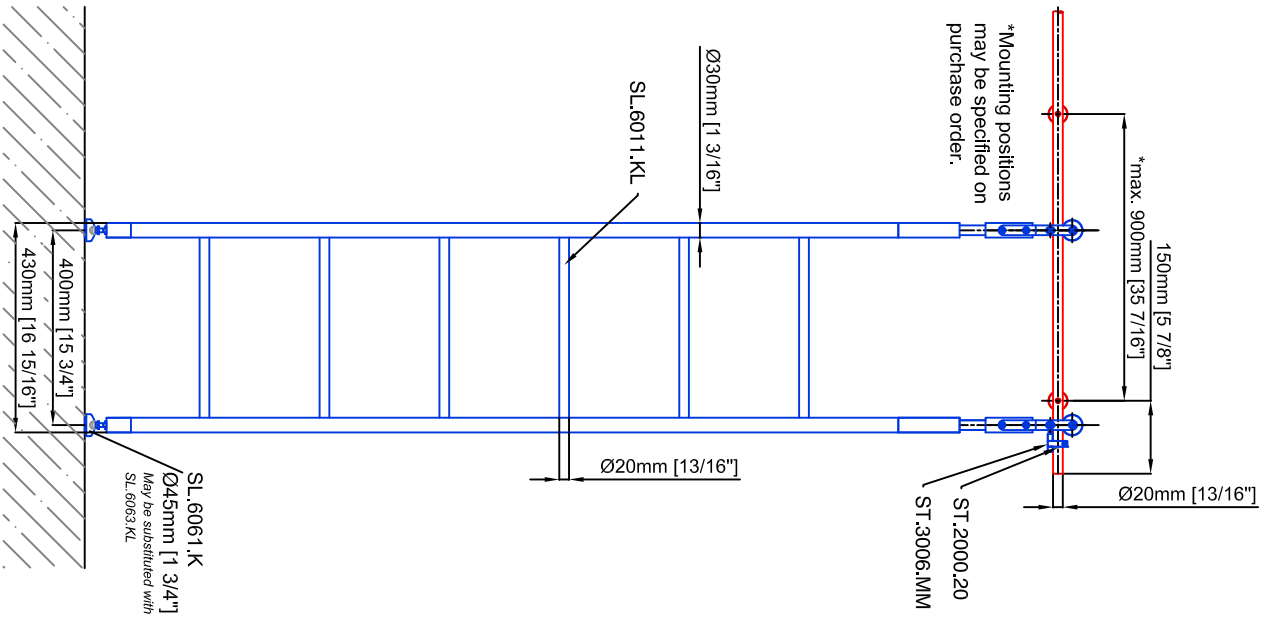
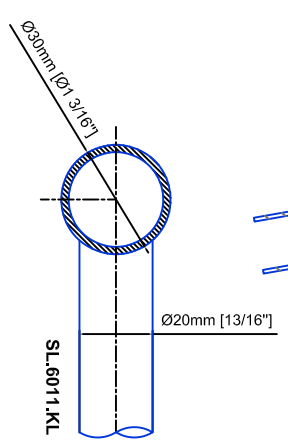


Technical drawings are subject to change without notice.
 All millimeter dimensions are exact and supersede inch conversions.
Ladder height at or above 3000mm [118 1/8"]
 require safety side rails SL.6052.KL

All ladder systems require reinforced walls, cabinets, or shelving.



ST.2100.MM
 Specify rosette diameter on purchase order available at
 Ø20mm [13/16"]
 Ø40mm [1 9/16"]
 Ø50mm [1 15/16"]
 Ø60mm [2 3/8"]



Telescopic Ladder SL.6003.KL

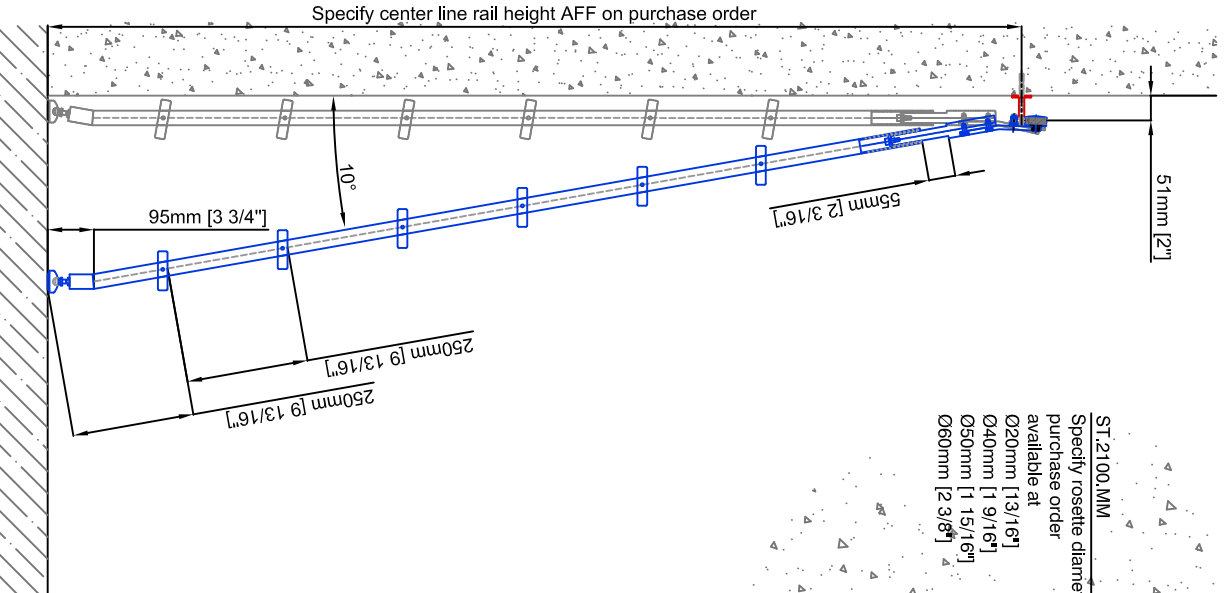
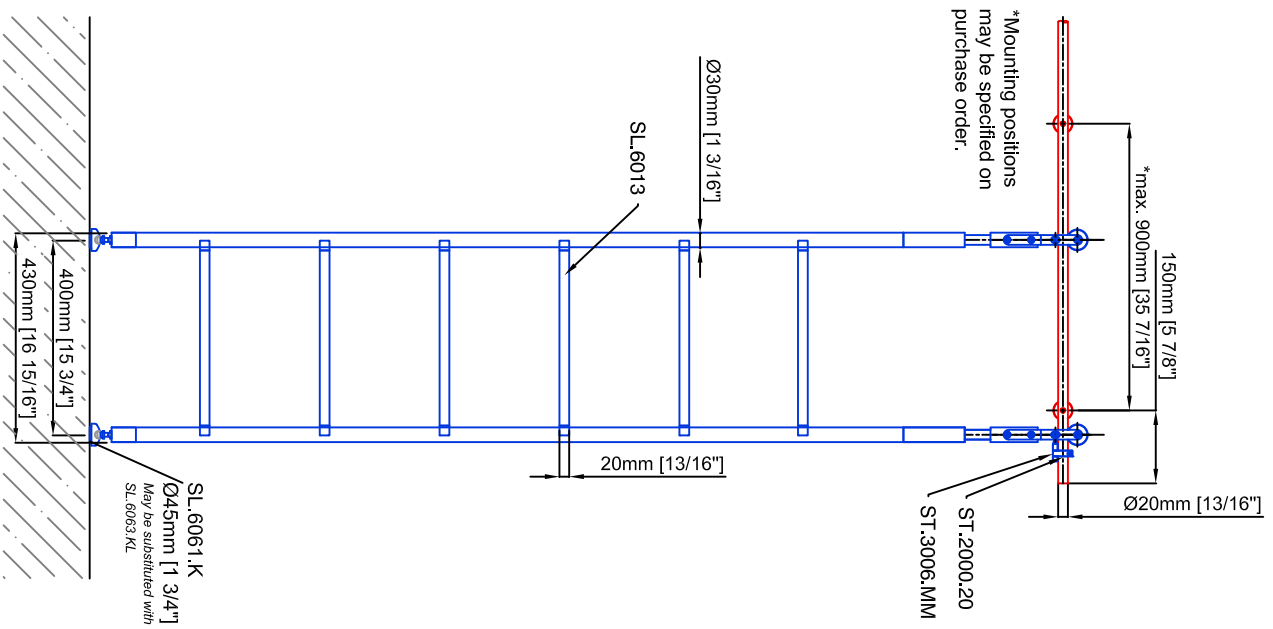
Date Prepared: October 2018 Prepared By: CDA | JRT



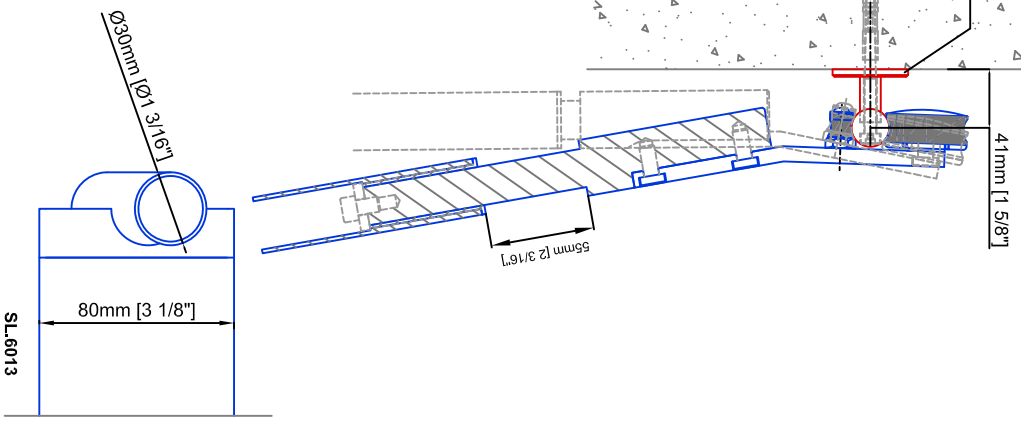
LUXURY
 GLASS & HARDWARE
 www.luxuryglassandhardware.com

Technical drawings are subject to change without notice.
 All millimeter dimensions are exact and supersede inch conversions.
Ladder height at or above 3000mm [118 1/8"]
 require safety side rails SL.6052.KL

All ladder systems require reinforced walls, cabinets, or shelving.



ST.2100.MM
 Specify rosette diameter on purchase order available at
 Ø20mm [13/16"]
 Ø40mm [1 9/16"]
 Ø50mm [1 15/16"]
 Ø60mm [2 3/8"]



Telescopic Ladder SL.6003.KL.E

Date Prepared: October 2018 Prepared By: CDA | JRT

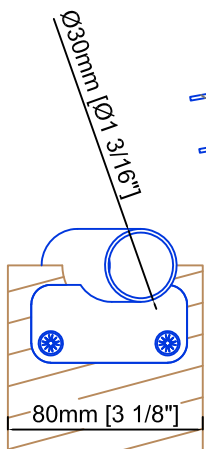
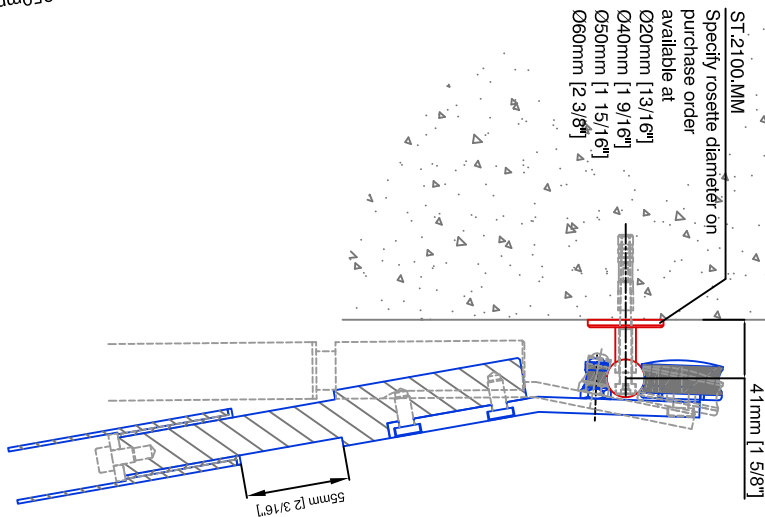
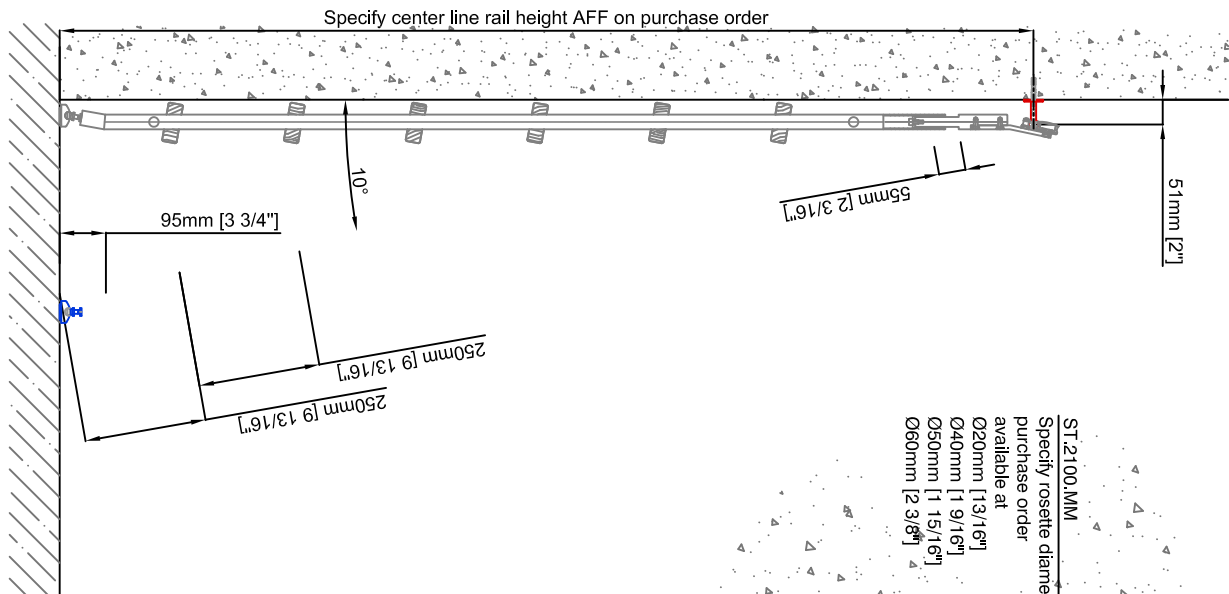
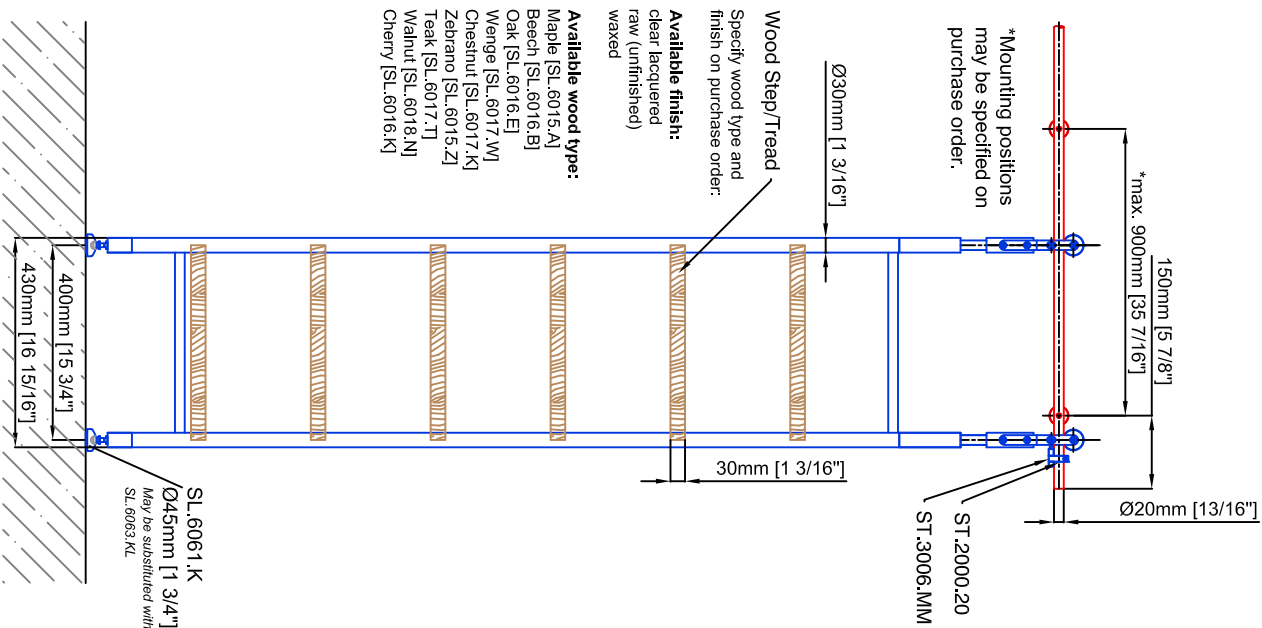


LUXURY
 GLASS & HARDWARE
 www.luxuryglassandhardware.com

Technical drawings are subject to change without notice.
All millimeter dimensions are exact and supersede inch conversions.

Ladder height at or above 3000mm [118 1/8"]
require safety side rails SL.6052.KL

All ladder systems require reinforced walls, cabinets, or shelving.



Telescopic Ladder SL.6003.KL

Date Prepared: October 2018

Prepared By: CDA | JRT



LUXURY
GLASS & HARDWARE
www.luxuryglassandhardware.com