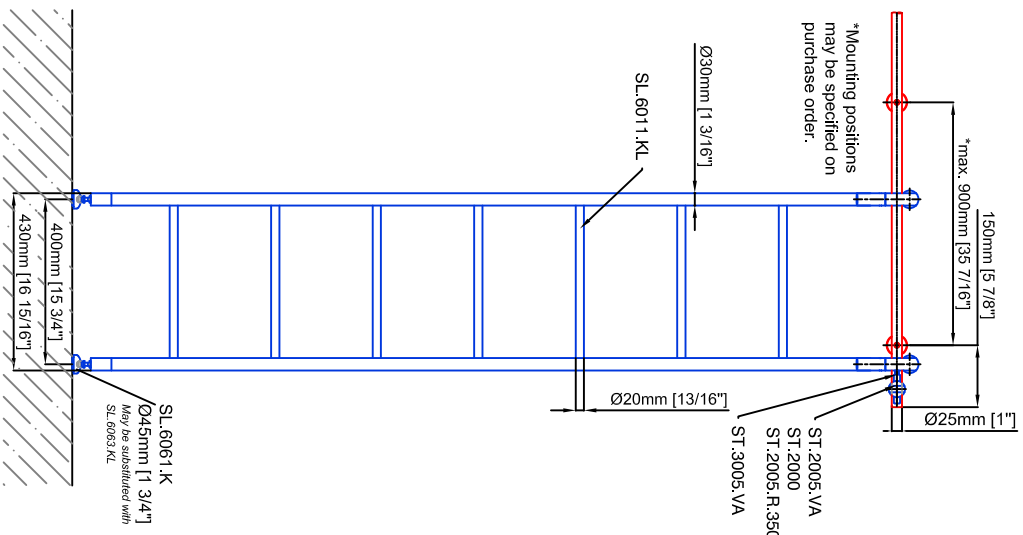
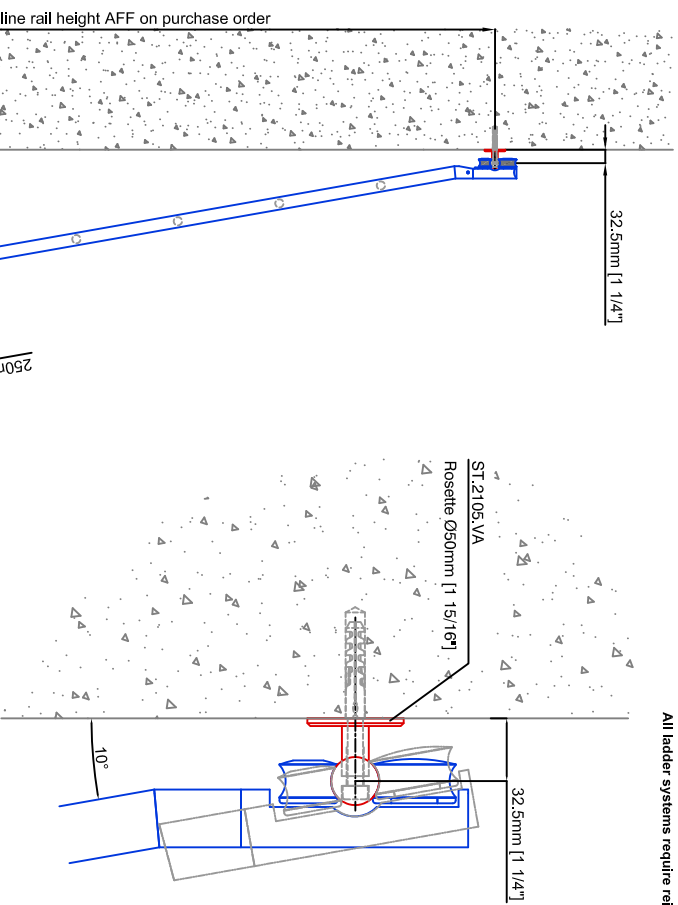
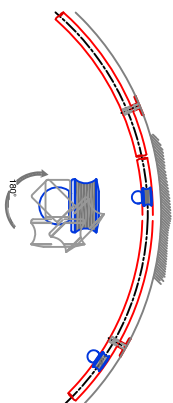


Technical drawings are subject to change without notice.  
All millimeter dimensions are exact and supersede inch conversions.

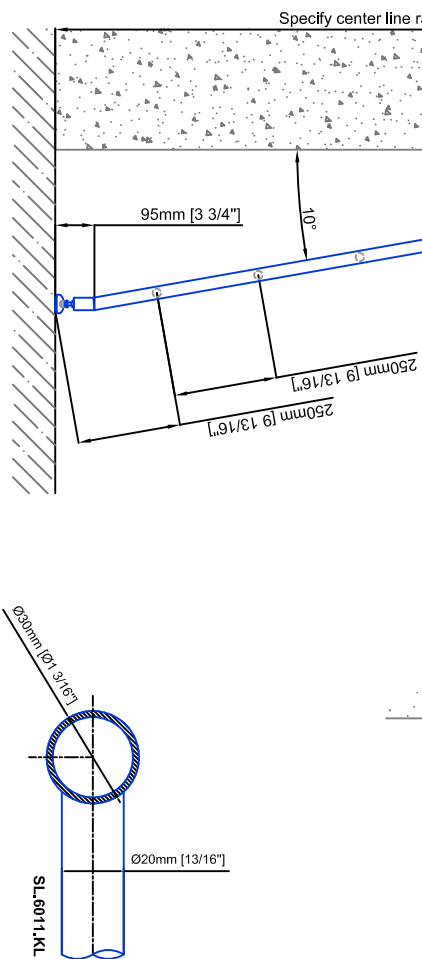
Ladder height at or above 3000mm [118 1/8"]  
require safety slide rails SL.6052.KL



Example:  
- Curved rail  
- Rail radius on request



All ladder systems require reinforced walls, cabinets, or shelving.



# Vario Ladder SL.6004.KL

Date Prepared: October 2018

Prepared By: CDA | JRT

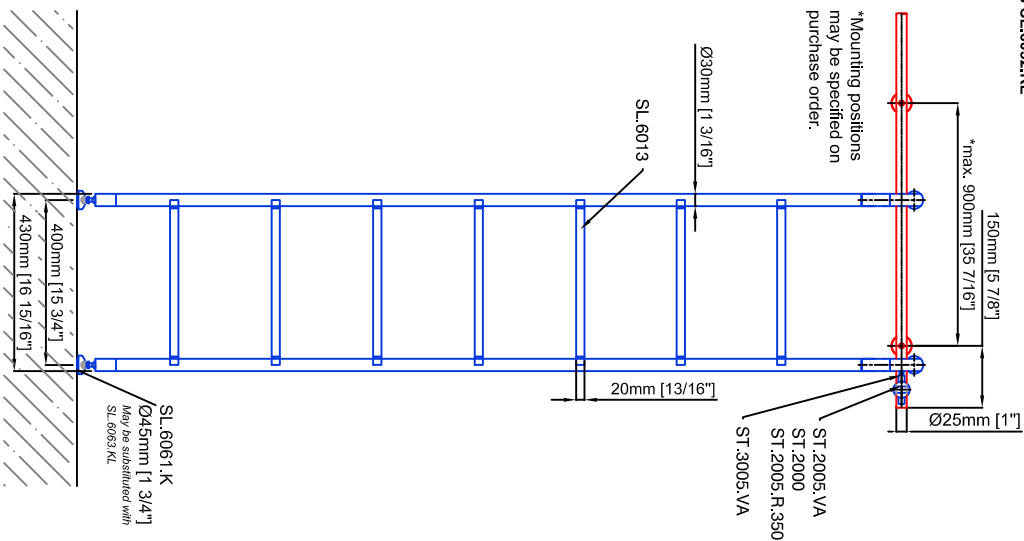


**LUXURY**  
GLASS & HARDWARE

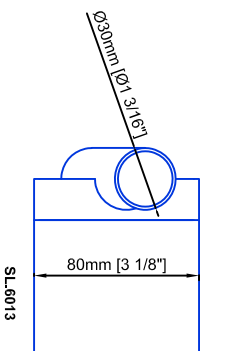
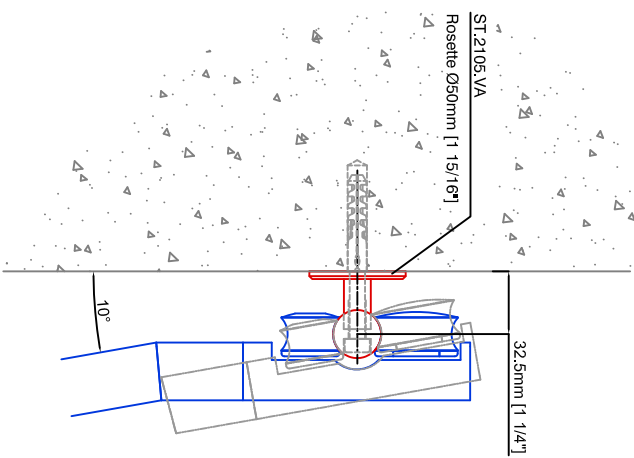
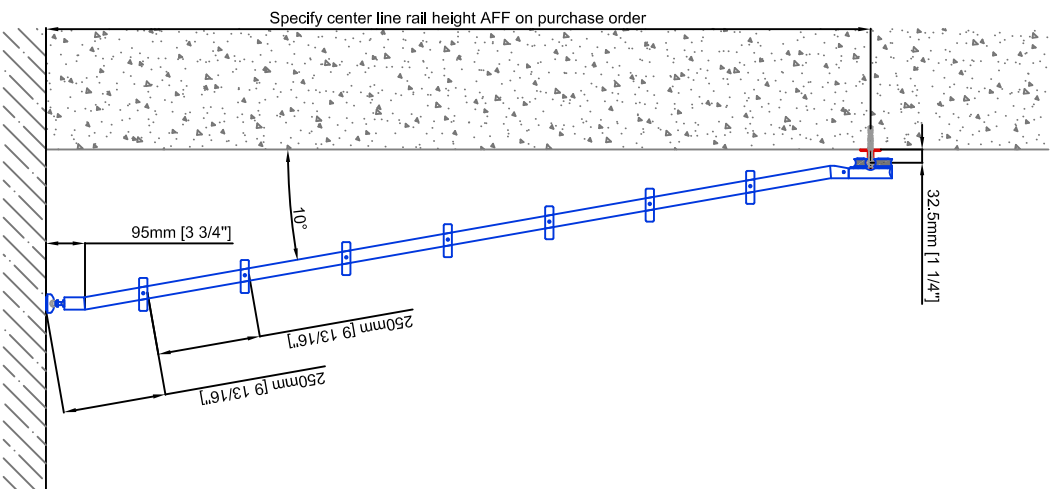
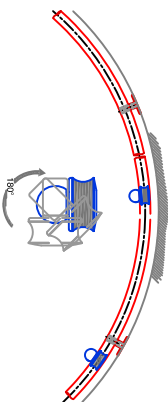
www.luxuryglassandhardware.com

Technical drawings are subject to change without notice.  
All millimeter dimensions are exact and supersede inch conversions.

Ladder height at or above 3000mm [118 1/8"]  
require safety slide rails SL.6052.KL



Example:  
- Curved rail  
- Rail radius on request



All ladder systems require reinforced walls, cabinets, or shelving.

# Vario Ladder SL.6004.KL.E

Date Prepared: October 2018

Prepared By: CDA | JRT

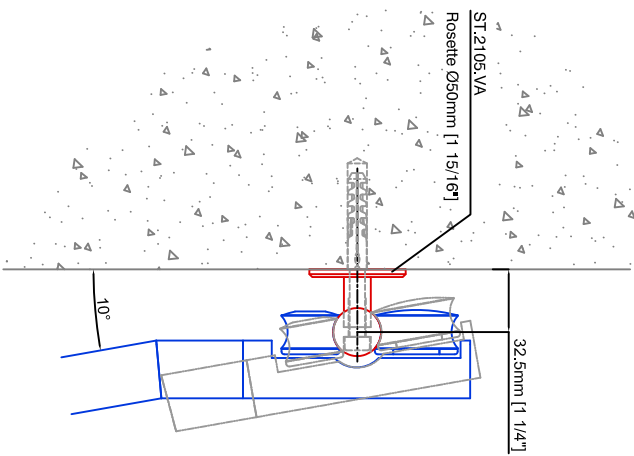
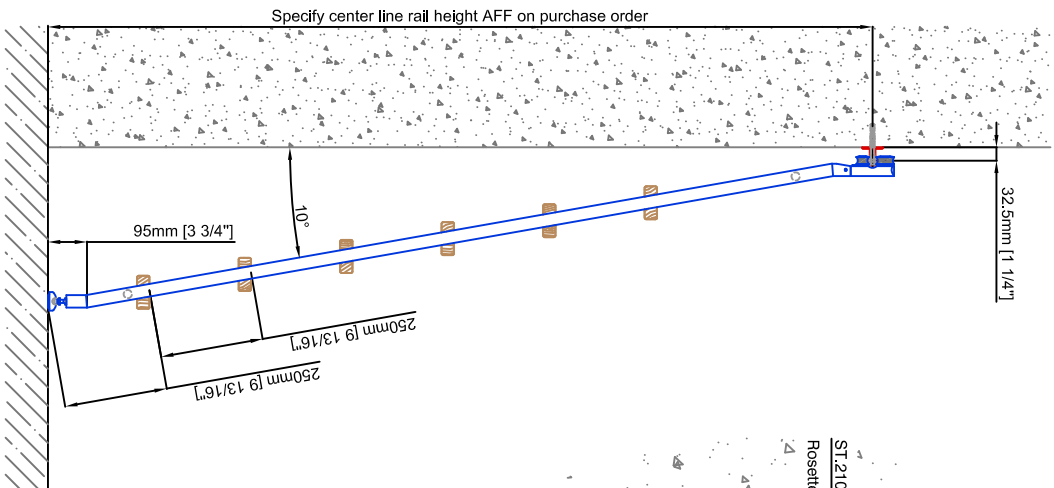
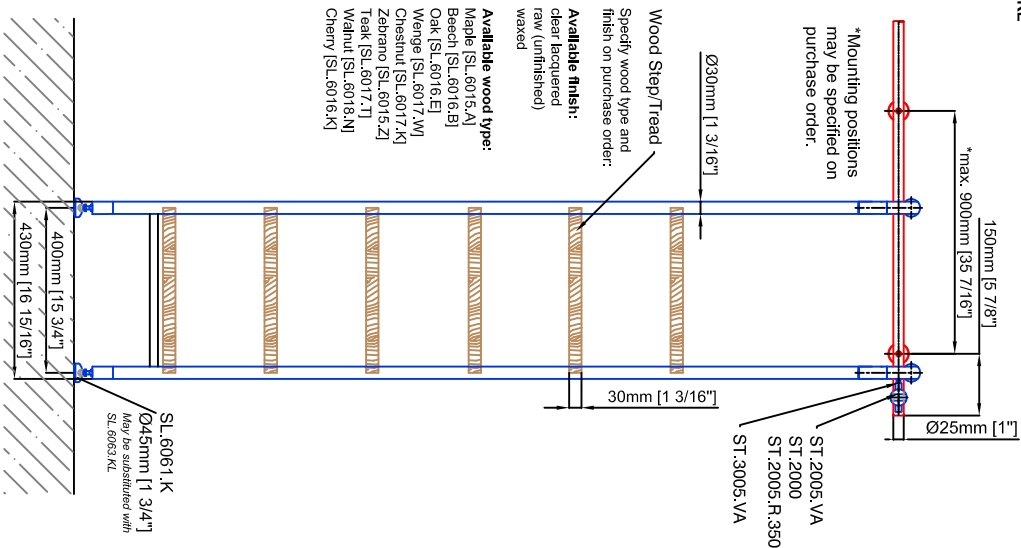


**LUXURY**  
GLASS & HARDWARE

www.luxuryglassandhardware.com

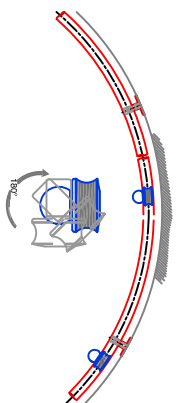
Technical drawings are subject to change without notice.  
All millimeter dimensions are exact and supersede inch conversions.

Ladder height at or above 3000mm [118 1/8"]  
require safety slide rails SL.6052.KL



All ladder systems require reinforced walls, cabinets, or shelving.

Example:  
- Curved rail  
- Rail radius on request



# Vario Ladder SL.6004.KL.H

Date Prepared: October 2018

Prepared By: CDA | JRT



**LUXURY**  
GLASS & HARDWARE

www.luxuryglassandhardware.com